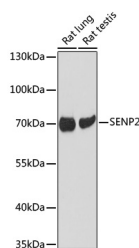


SENP2 Polyclonal Antibody

Catalog No.	E-AB-67283	Reactivity	M,R
Storage	Store at -20°C. Avoid freeze / thaw cycles.	Host	Rabbit
Applications	WB	Isotype	IgG

Note: Centrifuge before opening to ensure complete recovery of vial contents.

Images



Western blot analysis of extracts of various cell line using SENP2 Polyclonal Antibody at dilution of 1:1000.

Immunogen Information

Immunogen	Recombinant protein of human SENP2.
GeneID	59343
Swissprot	Q9HC62
Synonyms	AXAM2,SMT3IP2,SENP2

Product Information

Calculated MW	68kDa
Observed MW	68kDa
Buffer	PBS with 0.02% sodium azide, 50% glycerol, pH7.3.
Purify	Affinity purification
Dilution	WB 1:500-1:2000

Background

SENP2 (SUMO Specific Peptidase 2) is a Protein Coding gene. Among its related pathways are Metabolism of proteins and Wnt signaling pathway. Gene Ontology (GO) annotations related to this gene include protein domain specific binding and SUMO-specific protease activity. An important paralog of this gene is SENP1.

For Research Use Only

Thank you for your recent purchase.
If you would like to learn more about antibodies, please visit www.elabscience.com.

Focus on your research Service for life science

Applications: WB-Western Blot IHC-Immunohistochemistry IF-Immunofluorescence IP-Immunoprecipitation FC-Flow cytometry ChIP-Chromatin Immunoprecipitation Reactivity: H-Human R-Rat M-Mouse Mk-Monkey Dg-Dog Ch-Chicken Hm-Hamster Rb-Rabbit Sh-Sheep Pg-Pig Z-Zebrafish X-Xenopus C-Cow.