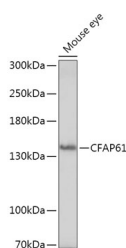


CFAP61 Polyclonal Antibody

Catalog No.	E-AB-67314	Reactivity	H,M
Storage	Store at -20°C. Avoid freeze / thaw cycles.	Host	Rabbit
Applications	WB	Isotype	IgG

Note: Centrifuge before opening to ensure complete recovery of vial contents.

Images



Western blot analysis of extracts of Mouse eye using CFAP61 Polyclonal Antibody at dilution of 1:1000.

Immunogen Information

Immunogen	A synthetic peptide of human CFAP61.
GeneID	26074
Swissprot	Q8NHU2
Synonyms	C20orf26,CaM-IP3,dJ1002M8.3,dJ1178H5.4,CFAP61

Product Information

Calculated MW	141kDa
Observed MW	141KDa
Buffer	PBS with 0.02% sodium azide, 50% glycerol, pH7.3.
Purify	Affinity purification
Dilution	WB 1:500-1:2000

Background

CFAP61 (Cilia And Flagella Associated Protein 61) is a Protein Coding gene. Diseases associated with CFAP61 include Rigid Spine Muscular Dystrophy 1 and Corneal Dystrophy, Endothelial, X-Linked. Gene Ontology (GO) annotations related to this gene include oxidoreductase activity.

For Research Use Only

Thank you for your recent purchase.

If you would like to learn more about antibodies, please visit www.elabscience.com.

**Focus on your research
 Service for life science**

Applications:WB-Western Blot IHC-Immunohistochemistry IF-Immunofluorescence IP-Immunoprecipitation FC-Flow cytometry ChIP-Chromatin Immunoprecipitation Reactivity: H-Human R-Rat M-Mouse Mk-Monkey Dg-Dog Ch-Chicken Hm-Hamster Rb-Rabbit Sh-Sheep Pg-Pig Z-Zebrafish X-Xenopus C-Cow.