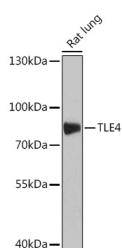


## TLE4 Polyclonal Antibody

<b>Catalog No.</b>	E-AB-67350	<b>Reactivity</b>	R
<b>Storage</b>	Store at -20°C. Avoid freeze / thaw cycles.	<b>Host</b>	Rabbit
<b>Applications</b>	WB	<b>Isotype</b>	IgG

**Note:** Centrifuge before opening to ensure complete recovery of vial contents.

### Images



Western blot analysis of extracts of Rat lung using TLE4 Polyclonal Antibody at dilution of 1:1000.

### Immunogen Information

<b>Immunogen</b>	Recombinant protein of human TLE4.
<b>GeneID</b>	7091
<b>Swissprot</b>	Q04727
<b>Synonyms</b>	ESG,BCE1,ESG4,GRG4,BCE-1,Grg-4,E(spl),E(spl),TLE4

### Product Information

<b>Calculated MW</b>	84kDa
<b>Observed MW</b>	84kDa
<b>Buffer</b>	PBS with 0.02% sodium azide, 50% glycerol, pH7.3.
<b>Purify</b>	Affinity purification
<b>Dilution</b>	WB 1:500-1:2000

### Background

TLE4 (TLE Family Member 4, Transcriptional Corepressor) is a Protein Coding gene. Among its related pathways are Regulation of Wnt-mediated beta catenin signaling and target gene transcription and Signaling by GPCR. Gene Ontology (GO) annotations related to this gene include chromatin binding and transcription factor activity, RNA polymerase II distal enhancer sequence-specific binding. An important paralog of this gene is TLE1.

#### For Research Use Only

Thank you for your recent purchase.  
 If you would like to learn more about antibodies, please visit [www.elabscience.com](http://www.elabscience.com).

**Focus on your research  
 Service for life science**

Applications: WB-Western Blot IHC-Immunohistochemistry IF-Immunofluorescence IP-Immunoprecipitation FC-Flow cytometry ChIP-Chromatin Immunoprecipitation Reactivity: H-Human R-Rat M-Mouse Mk-Monkey Dg-Dog Ch-Chicken Hm-Hamster Rb-Rabbit Sh-Sheep Pg-Pig Z-Zebrafish X-Xenopus C-Cow.