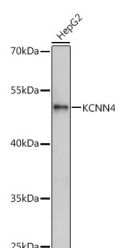


KCNN4 Polyclonal Antibody

| | | | |
|---------------------|---|-------------------|--------|
| Catalog No. | E-AB-67394 | Reactivity | H |
| Storage | Store at -20°C. Avoid freeze / thaw cycles. | Host | Rabbit |
| Applications | WB | Isotype | IgG |

Note: Centrifuge before opening to ensure complete recovery of vial contents.

Images



Western blot analysis of extracts of HepG2 cells using KCNN4 Polyclonal Antibody at dilution of 1:1000.

Immunogen Information

| | |
|------------------|---|
| Immunogen | Recombinant fusion protein of human KCNN4 (NP_002241.1). |
| GeneID | 3783 |
| Swissprot | O15554 |
| Synonyms | KCNN4,DHS2,IK,IK1,IKCA1,KCA4,KCa3.1,SK4,hIKCa1,hKCa4,hSK4 |

Product Information

| | |
|----------------------|---|
| Calculated MW | 47kDa |
| Observed MW | 53kDa |
| Buffer | PBS with 0.02% sodium azide, 50% glycerol, pH7.3. |
| Purify | Affinity purification |
| Dilution | WB 1:500-1:2000 |

Background

The protein encoded by this gene is part of a potentially heterotetrameric voltage-independent potassium channel that is activated by intracellular calcium. Activation is followed by membrane hyperpolarization, which promotes calcium influx. The encoded protein may be part of the predominant calcium-activated potassium channel in T-lymphocytes. This gene is similar to other KCNN family potassium channel genes, but it differs enough to possibly be considered as part of a new subfamily.

For Research Use Only

Thank you for your recent purchase.
 If you would like to learn more about antibodies, please visit www.elabscience.com.

**Focus on your research
 Service for life science**

Applications:WB-Western Blot IHC-Immunohistochemistry IF-Immunofluorescence IP-Immunoprecipitation FC-Flow cytometry ChIP-Chromatin Immunoprecipitation Reactivity: H-Human R-Rat M-Mouse Mk-Monkey Dg-Dog Ch-Chicken Hm-Hamster Rb-Rabbit Sh-Sheep Pg-Pig Z-Zebrafish X-Xenopus C-Cow.