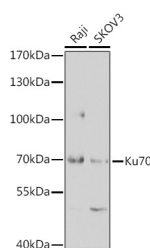


KU70 Polyclonal Antibody

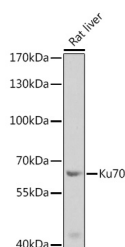
Catalog No.	E-AB-67404	Reactivity	H,M,R
Storage	Store at -20°C. Avoid freeze / thaw cycles.	Host	Rabbit
Applications	WB,IHC	Isotype	IgG

Note: Centrifuge before opening to ensure complete recovery of vial contents.

Images



Western blot analysis of extracts of various cell lines using Ku70 Polyclonal Antibody at 1:1000 dilution.



Western blot analysis of extracts of rat liver using Ku70 Polyclonal Antibody at 1:1000 dilution.

Immunogen Information

Immunogen	Recombinant fusion protein of human KU70
GeneID	2547
Swissprot	P12956
Synonyms	XRCC6,CTC75,CTCBF,G22P1,KU70,ML8,TLAA

Product Information

Calculated MW	65kDa/69kDa
Observed MW	68kDa
Buffer	PBS with 0.02% sodium azide,50% glycerol,pH7.3.
Purify	Affinity purification
Dilution	WB 1:500-1:2000,IHC 1:50-1:200

Background

The p70/p80 autoantigen is a nuclear complex consisting of two subunits with molecular masses of approximately 70 and 80 kDa. The complex functions as a single-stranded DNA-dependent ATP-dependent helicase. The complex may be involved in the repair of nonhomologous DNA ends such as that required for double-strand break repair, transposition, and V(D)J recombination. High levels of autoantibodies to p70 and p80 have been found in some patients with systemic lupus erythematosus.

For Research Use Only

Thank you for your recent purchase.
 If you would like to learn more about antibodies, please visit www.elabscience.com.

**Focus on your research
 Service for life science**

Applications:WB-Western Blot IHC-Immunohistochemistry IF-Immunofluorescence IP-Immunoprecipitation FC-Flow cytometry ChIP-Chromatin Immunoprecipitation Reactivity: H-Human R-Rat M-Mouse Mk-Monkey Dg-Dog Ch-Chicken Hm-Hamster Rb-Rabbit Sh-Sheep Pg-Pig Z-Zebrafish X-Xenopus C-Cow.