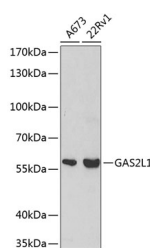


GAS2L1 Polyclonal Antibody

Catalog No.	E-AB-67416	Reactivity	H
Storage	Store at -20°C. Avoid freeze / thaw cycles.	Host	Rabbit
Applications	WB	Isotype	IgG

Note: Centrifuge before opening to ensure complete recovery of vial contents.

Images



Western blot analysis of extracts of various cell lines using GAS2L1 Polyclonal Antibody at dilution of 1:500.

Immunogen Information

Immunogen	Recombinant fusion protein of human GAS2L1 (NP_006469.2).
GeneID	10634
Swissprot	Q99501
Synonyms	GAS2L1,GAR22

Product Information

Calculated MW	34kDa/36kDa/48kDa/72kDa
Observed MW	58kDa
Buffer	PBS with 0.02% sodium azide, 50% glycerol, pH7.3.
Purify	Affinity purification
Dilution	WB 1:500-1:2000

Background

This gene encodes a member of the growth arrest-specific 2 protein family. This protein binds components of the cytoskeleton and may be involved in mediating interactions between microtubules and microfilaments. Alternate splicing results in multiple transcript variants. A pseudogene of this gene is found on chromosome 9.

For Research Use Only

Thank you for your recent purchase.

If you would like to learn more about antibodies, please visit www.elabscience.com.

**Focus on your research
 Service for life science**

Applications:WB-Western Blot IHC-Immunohistochemistry IF-Immunofluorescence IP-Immunoprecipitation FC-Flow cytometry ChIP-Chromatin Immunoprecipitation Reactivity: H-Human R-Rat M-Mouse Mk-Monkey Dg-Dog Ch-Chicken Hm-Hamster Rb-Rabbit Sh-Sheep Pg-Pig Z-Zebrafish X-Xenopus C-Cow.