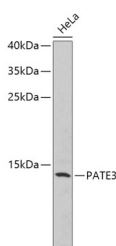


PATE3 Polyclonal Antibody

Catalog No.	E-AB-67424	Reactivity	H
Storage	Store at -20°C. Avoid freeze / thaw cycles.	Host	Rabbit
Applications	WB	Isotype	IgG

Note: Centrifuge before opening to ensure complete recovery of vial contents.

Images



Western blot analysis of extracts of HeLa cells using PATE3 Polyclonal Antibody.

Immunogen Information

Immunogen	Recombinant fusion protein of human PATE3 (NP_001123355.3).
GeneID	100169851
Swissprot	B3GLJ2
Synonyms	PATE3,HEL-127,PATE-DJ

Product Information

Calculated MW	11kDa
Observed MW	12kDa
Buffer	PBS with 0.02% sodium azide, 50% glycerol, pH7.3.
Purify	Affinity purification
Dilution	WB 1:500-1:2000

Background

PATE3 (Prostate And Testis Expressed 3) is a Protein Coding gene. Diseases associated with PATE3 include Mal De Meleda. An important paralog of this gene is PATE1.

For Research Use Only

Thank you for your recent purchase.

If you would like to learn more about antibodies, please visit www.elabscience.com.

**Focus on your research
Service for life science**

Applications:WB-Western Blot IHC-Immunohistochemistry IF-Immunofluorescence IP-Immunoprecipitation FC-Flow cytometry ChIP-Chromatin Immunoprecipitation Reactivity: H-Human R-Rat M-Mouse Mk-Monkey Dg-Dog Ch-Chicken Hm-Hamster Rb-Rabbit Sh-Sheep Pg-Pig Z-Zebrafish X-Xenopus C-Cow.