

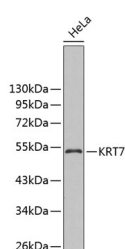
## KRT7 Polyclonal Antibody

**Catalog No.** E-AB-67476  
**Storage** Store at -20°C. Avoid freeze / thaw cycles.  
**Applications** WB,IF

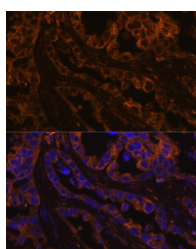
**Reactivity** H,M,R  
**Host** Rabbit  
**Isotype** IgG

**Note:** Centrifuge before opening to ensure complete recovery of vial contents.

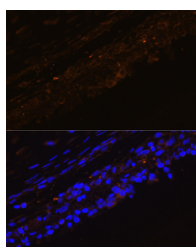
### Images



Western blot analysis of extracts of HeLa cells using Cytokeratin 7 (Cytokeratin 7 (KRT7)) Polyclonal Antibody.



Immunofluorescence analysis of human lung cancer cells using Cytokeratin 7 (Cytokeratin 7 (KRT7)) Polyclonal Antibody at dilution of 1:100. Blue: DAPI for nuclear staining.



Immunofluorescence analysis of mouse bronchus cells using Cytokeratin 7 (Cytokeratin 7 (KRT7)) Polyclonal antibody at dilution of 1:100. Blue: DAPI for nuclear staining.

### Immunogen Information

**Immunogen** Recombinant fusion protein of human KRT7  
**GeneID** 3855  
**Swissprot** P08729  
**Synonyms** KRT7,CK7,K2C7,K7,SCL,keratin 7,Keratin

### Product Information

**Calculated MW** 51kDa  
**Observed MW** 51kDa  
**Buffer** PBS with 0.02% sodium azide,50% glycerol,pH7.3.  
**Purify** Affinity purification  
**Dilution** WB 1:500-1:2000,IF 1:50-1:200

### Background

The protein encoded by this gene is a member of the keratin gene family. The type II cytokeratins consist of basic or neutral proteins which are arranged in pairs of heterotypic keratin chains coexpressed during differentiation of simple and stratified epithelial tissues. This type II cytokeratin is specifically expressed in the simple epithelia lining the cavities of the internal organs and in the gland ducts and blood vessels. The genes encoding the type II cytokeratins are clustered in a region of chromosome 12q12-q13. Alternative splicing may result in several transcript variants; however, not all variants have been fully described.

### For Research Use Only

Thank you for your recent purchase.  
If you would like to learn more about antibodies, please visit [www.elabscience.com](http://www.elabscience.com).

**Focus on your research**  
**Service for life science**

Applications:WB-Western Blot IHC-Immunohistochemistry IF-Immunofluorescence IP-Immunoprecipitation FC-Flow cytometry ChIP-Chromatin Immunoprecipitation Reactivity: H-Human R-Rat M-Mouse Mk-Monkey Dg-Dog Ch-Chicken Hm-Hamster Rb-Rabbit Sh-Sheep Pg-Pig Z-Zebrafish X-Xenopus C-Cow.