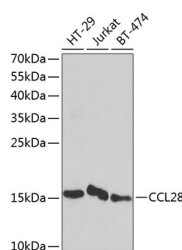


## CCL28 Polyclonal Antibody

<b>Catalog No.</b>	E-AB-67481	<b>Reactivity</b>	H,M
<b>Storage</b>	Store at -20°C. Avoid freeze / thaw cycles.	<b>Host</b>	Rabbit
<b>Applications</b>	WB	<b>Isotype</b>	IgG

**Note:** Centrifuge before opening to ensure complete recovery of vial contents.

### Images



Western blot analysis of extracts of various cell lines using CCL28 Polyclonal Antibody at dilution of 1:1000.

### Immunogen Information

<b>Immunogen</b>	Recombinant fusion protein of human CCL28 (NP_683513.1).
<b>GeneID</b>	56477
<b>Swissprot</b>	Q9NRJ3
<b>Synonyms</b>	CCL28,CCK1,MEC,SCYA28

### Product Information

<b>Calculated MW</b>	12kDa/14kDa
<b>Observed MW</b>	14kDa
<b>Buffer</b>	PBS with 0.02% sodium azide, 50% glycerol, pH7.3.
<b>Purify</b>	Affinity purification
<b>Dilution</b>	WB 1:500-1:2000

### Background

This antimicrobial gene belongs to the subfamily of small cytokine CC genes. Cytokines are a family of secreted proteins involved in immunoregulatory and inflammatory processes. The CC cytokines are proteins characterized by two adjacent cysteines. The cytokine encoded by this gene displays chemotactic activity for resting CD4 or CD8 T cells and eosinophils. The product of this gene binds to chemokine receptors CCR3 and CCR10. This chemokine may play a role in the physiology of extracutaneous epithelial tissues, including diverse mucosal organs. Multiple transcript variants encoding two different isoforms have been found for this gene.

#### For Research Use Only

Thank you for your recent purchase.  
 If you would like to learn more about antibodies, please visit [www.elabscience.com](http://www.elabscience.com).

**Focus on your research  
 Service for life science**

Applications: WB-Western Blot IHC-Immunohistochemistry IF-Immunofluorescence IP-Immunoprecipitation FC-Flow cytometry ChIP-Chromatin Immunoprecipitation Reactivity: H-Human R-Rat M-Mouse Mk-Monkey Dg-Dog Ch-Chicken Hm-Hamster Rb-Rabbit Sh-Sheep Pg-Pig Z-Zebrafish X-Xenopus C-Cow.