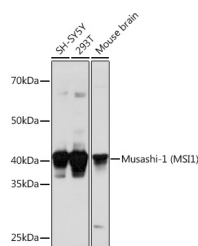


MSI1 Polyclonal Antibody

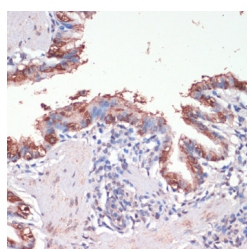
Catalog No.	E-AB-67483	Reactivity	H,M,R
Storage	Store at -20°C. Avoid freeze / thaw cycles.	Host	Rabbit
Applications	WB,IHC	Isotype	IgG

Note: Centrifuge before opening to ensure complete recovery of vial contents.

Images



Western blot analysis of extracts of various cell lines using Musashi-1 (Musashi-1 (MSI1)) Polyclonal Antibody at 1:1000 dilution.



Immunohistochemistry of paraffin-embedded rat lung using Musashi-1 (Musashi-1 (MSI1)) Polyclonal Antibody at dilution of 1:200 (40x lens). Perform microwave antigen retrieval with 10 mM PBS buffer pH 7.2 before commencing with IHC staining protocol.

Immunogen Information

Immunogen	A synthetic peptide of human MSI1
GeneID	4440
Swissprot	O43347
Synonyms	MSI1

Product Information

Calculated MW	39kDa
Observed MW	42kDa
Buffer	PBS with 0.01% thiomersal, 50% glycerol, pH 7.3.
Purify	Affinity purification
Dilution	WB 1:500-1:1000, IHC 1:50-1:100

Background

This gene encodes a protein containing two conserved tandem RNA recognition motifs. Similar proteins in other species function as RNA-binding proteins and play central roles in posttranscriptional gene regulation. Expression of this gene has been correlated with the grade of the malignancy and proliferative activity in gliomas and melanomas. A pseudogene for this gene is located on chromosome 11q13.

For Research Use Only

Thank you for your recent purchase.
 If you would like to learn more about antibodies, please visit www.elabscience.com.

**Focus on your research
 Service for life science**

Applications: WB-Western Blot IHC-Immunohistochemistry IF-Immunofluorescence IP-Immunoprecipitation FC-Flow cytometry ChIP-Chromatin Immunoprecipitation Reactivity: H-Human R-Rat M-Mouse Mk-Monkey Dg-Dog Ch-Chicken Hm-Hamster Rb-Rabbit Sh-Sheep Pg-Pig Z-Zebrafish X-Xenopus C-Cow.