

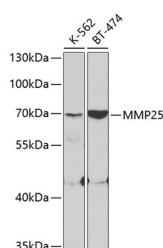
MMP25 Polyclonal Antibody

Catalog No. E-AB-67535
Storage Store at -20°C. Avoid freeze / thaw cycles.
Applications WB,IF

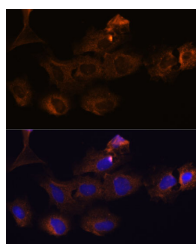
Reactivity H,M,R
Host Rabbit
Isotype IgG

Note: Centrifuge before opening to ensure complete recovery of vial contents.

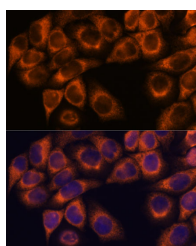
Images



Western blot analysis of extracts of various cell lines using MMP25 Polyclonal Antibody at 1:400 dilution.



Immunofluorescence analysis of C6 cells using MMP25 Polyclonal Antibody at dilution of 1:100. Blue: DAPI for nuclear staining.



Immunofluorescence analysis of HeLa cells using MMP25 Polyclonal antibody at dilution of 1:100. Blue: DAPI for nuclear staining.

Immunogen Information

Immunogen A synthetic peptide of human MMP25
GeneID 64386
Swissprot Q9NPA2
Synonyms MMP25,MMP-25,MMP20,MMP20A,MMPL1,MT-MMP 6,MT-MMP6,MT6-MMP,MT6MMP,MTMMP6

Product Information

Calculated MW 62kDa
Observed MW 70kDa
Buffer PBS with 0.01% thiomersal,50% glycerol,pH7.3.
Purify Affinity purification
Dilution WB 1:500-1:2000,IF 1:50-1:200

Background

Proteins of the matrix metalloproteinase (MMP) family are involved in the breakdown of extracellular matrix in normal physiological processes, such as embryonic development, reproduction, and tissue remodeling, as well as in disease processes, such as arthritis and metastasis. Most MMPs are secreted as inactive proproteins which are activated when cleaved by extracellular proteinases. However, the protein encoded by this gene is a member of the membrane-type MMP (MT-MMP) subfamily, attached to the plasma membrane via a glycosylphosphatidyl inositol anchor. In response to bacterial infection or inflammation, the encoded protein is thought to inactivate alpha-1 proteinase inhibitor, a major tissue protectant against proteolytic enzymes released by activated neutrophils, facilitating the transendothelial migration of neutrophils to inflammatory sites. The encoded protein may also play a role in tumor invasion and metastasis through activation of MMP2. The gene has previously been referred to as MMP20 but has been renamed MMP25.

For Research Use Only

Thank you for your recent purchase.
If you would like to learn more about antibodies, please visit www.elabscience.com.

Focus on your research Service for life science

Applications:WB-Western Blot IHC-Immunohistochemistry IF-Immunofluorescence IP-Immunoprecipitation FC-Flow cytometry ChIP-Chromatin Immunoprecipitation Reactivity: H-Human R-Rat M-Mouse Mk-Monkey Dg-Dog Ch-Chicken Hm-Hamster Rb-Rabbit Sh-Sheep Pg-Pig Z-Zebrafish X-Xenopus C-Cow.