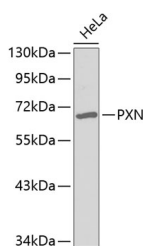


## PXN Polyclonal Antibody

<b>Catalog No.</b>	E-AB-67539	<b>Reactivity</b>	H,M
<b>Storage</b>	Store at -20°C. Avoid freeze / thaw cycles.	<b>Host</b>	Rabbit
<b>Applications</b>	WB	<b>Isotype</b>	IgG

**Note:** Centrifuge before opening to ensure complete recovery of vial contents.

### Images



Western blot analysis of extracts of HeLa cells using PXN Polyclonal Antibody.

### Immunogen Information

<b>Immunogen</b>	A synthetic peptide of human PXN
<b>GeneID</b>	5829
<b>Swissprot</b>	P49023
<b>Synonyms</b>	Paxillin,PXN,paxillin

### Product Information

<b>Calculated MW</b>	46kDa/60kDa/64kDa/66kDa
<b>Observed MW</b>	65kDa
<b>Buffer</b>	PBS with 0.02% sodium azide, 50% glycerol, pH7.3.
<b>Purify</b>	Affinity purification
<b>Dilution</b>	WB 1:500-1:1000

### Background

This gene encodes a cytoskeletal protein involved in actin-membrane attachment at sites of cell adhesion to the extracellular matrix (focal adhesion). Alternatively spliced transcript variants encoding different isoforms have been described for this gene. These isoforms exhibit different expression pattern, and have different biochemical, as well as physiological properties (PMID:9054445).

#### For Research Use Only

Thank you for your recent purchase.  
 If you would like to learn more about antibodies, please visit [www.elabscience.com](http://www.elabscience.com).

**Focus on your research  
 Service for life science**

Applications: WB-Western Blot IHC-Immunohistochemistry IF-Immunofluorescence IP-Immunoprecipitation FC-Flow cytometry ChIP-Chromatin Immunoprecipitation Reactivity: H-Human R-Rat M-Mouse Mk-Monkey Dg-Dog Ch-Chicken Hm-Hamster Rb-Rabbit Sh-Sheep Pg-Pig Z-Zebrafish X-Xenopus C-Cow.