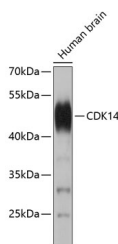


## CDK14 Polyclonal Antibody

<b>Catalog No.</b>	E-AB-67576	<b>Reactivity</b>	H
<b>Storage</b>	Store at -20°C. Avoid freeze / thaw cycles.	<b>Host</b>	Rabbit
<b>Applications</b>	WB	<b>Isotype</b>	IgG

**Note:** Centrifuge before opening to ensure complete recovery of vial contents.

### Images



Western blot analysis of extracts of Human brain using CDK14 Polyclonal Antibody.

### Immunogen Information

<b>Immunogen</b>	A synthetic peptide of human CDK14
<b>GeneID</b>	5218
<b>Swissprot</b>	O94921
<b>Synonyms</b>	CDK14,PFTAIRES1,PFTK1

### Product Information

<b>Calculated MW</b>	47kDa/50kDa/53kDa
<b>Observed MW</b>	45kDa
<b>Buffer</b>	PBS with 0.02% sodium azide, 50% glycerol, pH7.3.
<b>Purify</b>	Affinity purification
<b>Dilution</b>	WB 1:500-1:1000

### Background

CDK14 (Cyclin Dependent Kinase 14) is a Protein Coding gene. Among its related pathways are Transcriptional misregulation in cancer. Gene Ontology (GO) annotations related to this gene include transferase activity, transferring phosphorus-containing groups and protein tyrosine kinase activity. An important paralog of this gene is CDK15.

#### For Research Use Only

Thank you for your recent purchase.  
If you would like to learn more about antibodies, please visit [www.elabscience.com](http://www.elabscience.com).

**Focus on your research**  
**Service for life science**

Applications: WB-Western Blot IHC-Immunohistochemistry IF-Immunofluorescence IP-Immunoprecipitation FC-Flow cytometry ChIP-Chromatin Immunoprecipitation Reactivity: H-Human R-Rat M-Mouse Mk-Monkey Dg-Dog Ch-Chicken Hm-Hamster Rb-Rabbit Sh-Sheep Pg-Pig Z-Zebrafish X-Xenopus C-Cow.