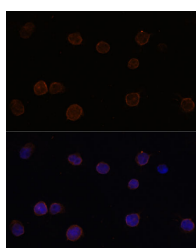


## ANO2 Polyclonal Antibody

<b>Catalog No.</b>	E-AB-67586	<b>Reactivity</b>	H,M,R
<b>Storage</b>	Store at -20°C. Avoid freeze / thaw cycles.	<b>Host</b>	Rabbit
<b>Applications</b>	IF	<b>Isotype</b>	IgG

**Note:** Centrifuge before opening to ensure complete recovery of vial contents.

### Images



Immunofluorescence analysis of Y79 cells using ANO2 Polyclonal Antibody at dilution of 1:100 (40x lens). Blue: DAPI for nuclear staining.

### Immunogen Information

<b>Immunogen</b>	Recombinant fusion protein of human ANO2 (NP_001265526.1).
<b>GeneID</b>	57101
<b>Swissprot</b>	Q9NQ90
<b>Synonyms</b>	ANO2,C12orf3,TMEM16B

### Product Information

<b>Buffer</b>	PBS with 0.02% sodium azide, 50% glycerol, pH7.3.
<b>Purify</b>	Affinity purification
<b>Dilution</b>	IF 1:50-1:100

### Background

ANO2 (Anoctamin 2) is a Protein Coding gene. Diseases associated with ANO2 include Von Willebrand Disease, Type 3 and Gnathodiaphyseal Dysplasia. Among its related pathways are Transport of glucose and other sugars, bile salts and organic acids, metal ions and amine compounds and Ion channel transport. Gene Ontology (GO) annotations related to this gene include protein homodimerization activity and intracellular calcium activated chloride channel activity. An important paralog of this gene is ANO1.

#### For Research Use Only

Thank you for your recent purchase.  
 If you would like to learn more about antibodies, please visit [www.elabscience.com](http://www.elabscience.com).

**Focus on your research  
 Service for life science**

Applications:WB-Western Blot IHC-Immunohistochemistry IF-Immunofluorescence IP-Immunoprecipitation FC-Flow cytometry ChIP-Chromatin Immunoprecipitation Reactivity: H-Human R-Rat M-Mouse Mk-Monkey Dg-Dog Ch-Chicken Hm-Hamster Rb-Rabbit Sh-Sheep Pg-Pig Z-Zebrafish X-Xenopus C-Cow.