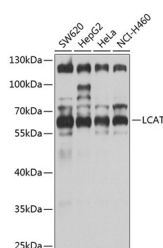


LCAT Polyclonal Antibody

| | | | |
|---------------------|---|-------------------|--------|
| Catalog No. | E-AB-67596 | Reactivity | H,M,R |
| Storage | Store at -20°C. Avoid freeze / thaw cycles. | Host | Rabbit |
| Applications | WB | Isotype | IgG |

Note: Centrifuge before opening to ensure complete recovery of vial contents.

Images



Western blot analysis of extracts of various cell lines using LCAT Polyclonal Antibody at 1:1000 dilution.

Immunogen Information

| | |
|------------------|--|
| Immunogen | Recombinant fusion protein of human LCAT |
| GeneID | 3931 |
| Swissprot | P04180 |
| Synonyms | LCAT |

Product Information

| | |
|----------------------|---|
| Calculated MW | 49kDa |
| Observed MW | 63kDa |
| Buffer | PBS with 0.02% sodium azide,50% glycerol,pH7.3. |
| Purify | Affinity purification |
| Dilution | WB 1:500-1:2000 |

Background

This gene encodes the extracellular cholesterol esterifying enzyme, lecithin-cholesterol acyltransferase. The esterification of cholesterol is required for cholesterol transport. Mutations in this gene have been found to cause fish-eye disease as well as LCAT deficiency.

For Research Use Only

Thank you for your recent purchase.
 If you would like to learn more about antibodies, please visit www.elabscience.com.

**Focus on your research
 Service for life science**

Applications:WB-Western Blot IHC-Immunohistochemistry IF-Immunofluorescence IP-Immunoprecipitation FC-Flow cytometry ChIP-Chromatin Immunoprecipitation Reactivity: H-Human R-Rat M-Mouse Mk-Monkey Dg-Dog Ch-Chicken Hm-Hamster Rb-Rabbit Sh-Sheep Pg-Pig Z-Zebrafish X-Xenopus C-Cow.