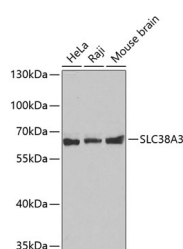


SLC38A3 Polyclonal Antibody

Catalog No.	E-AB-67618	Reactivity	H,M,R
Storage	Store at -20°C. Avoid freeze / thaw cycles.	Host	Rabbit
Applications	WB	Isotype	IgG

Note: Centrifuge before opening to ensure complete recovery of vial contents.

Images



Western blot analysis of extracts of various cell lines using SLC38A3 Polyclonal Antibody.

Immunogen Information

Immunogen	Recombinant fusion protein of human SLC38A3 (NP_006832.1).
GeneID	10991
Swissprot	Q99624
Synonyms	SLC38A3,G17,NAT1,SN1,SNAT3

Product Information

Calculated MW	55kDa
Observed MW	60kDa
Buffer	PBS with 0.02% sodium azide, 50% glycerol, pH7.3.
Purify	Affinity purification
Dilution	WB 1:500-1:2000

Background

SLC38A3 (Solute Carrier Family 38 Member 3) is a Protein Coding gene. Diseases associated with SLC38A3 include Dissociative Disorder and Sarcocystosis. Among its related pathways are Transport of glucose and other sugars, bile salts and organic acids, metal ions and amine compounds and Circadian entrainment. Gene Ontology (GO) annotations related to this gene include symporter activity and L-alanine transmembrane transporter activity. An important paralog of this gene is SLC38A5.

For Research Use Only

Thank you for your recent purchase.
If you would like to learn more about antibodies, please visit www.elabscience.com.

Focus on your research Service for life science

Applications: WB-Western Blot IHC-Immunohistochemistry IF-Immunofluorescence IP-Immunoprecipitation FC-Flow cytometry ChIP-Chromatin Immunoprecipitation Reactivity: H-Human R-Rat M-Mouse Mk-Monkey Dg-Dog Ch-Chicken Hm-Hamster Rb-Rabbit Sh-Sheep Pg-Pig Z-Zebrafish X-Xenopus C-Cow.