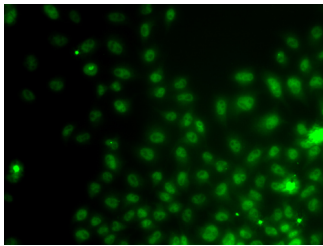


IWS1 Polyclonal Antibody

Catalog No.	E-AB-67623	Reactivity	H
Storage	Store at -20°C. Avoid freeze / thaw cycles.	Host	Rabbit
Applications	IF	Isotype	IgG

Note: Centrifuge before opening to ensure complete recovery of vial contents.

Images



Immunofluorescence analysis of A549 cells using IWS1 Polyclonal Antibody

Immunogen Information

Immunogen	Recombinant fusion protein of human IWS1 (NP_060439.2).
GeneID	55677
Swissprot	Q96ST2
Synonyms	IWS1

Product Information

Buffer	PBS with 0.02% sodium azide, 50% glycerol, pH7.3.
Purify	Affinity purification
Dilution	IF 1:50-1:200

Background

IWS1 (Interacts With SUPT6H, CTD Assembly Factor 1) is a Protein Coding gene. Diseases associated with IWS1 include Atrial Septal Defect 1. Among its related pathways are Gene Expression and HIV Transcription Elongation. An important paralog of this gene is MDN1.

For Research Use Only

Thank you for your recent purchase.

If you would like to learn more about antibodies, please visit www.elabscience.com.

**Focus on your research
 Service for life science**

Applications: WB-Western Blot IHC-Immunohistochemistry IF-Immunofluorescence IP-Immunoprecipitation FC-Flow cytometry ChIP-Chromatin Immunoprecipitation Reactivity: H-Human R-Rat M-Mouse Mk-Monkey Dg-Dog Ch-Chicken Hm-Hamster Rb-Rabbit Sh-Sheep Pg-Pig Z-Zebrafish X-Xenopus C-Cow.