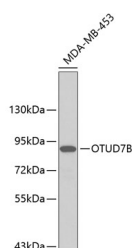


OTUD7B Polyclonal Antibody

Catalog No.	E-AB-67626	Reactivity	H
Storage	Store at -20°C. Avoid freeze / thaw cycles.	Host	Rabbit
Applications	WB	Isotype	IgG

Note: Centrifuge before opening to ensure complete recovery of vial contents.

Images



Western blot analysis of extracts of MDA-MB-453 cells using OTUD7B Polyclonal Antibody.

Immunogen Information

Immunogen	A synthetic Peptide of human OTUD7B
GeneID	56957
Swissprot	Q6GQQ9
Synonyms	OTUD7B,CEZANNE,ZA20D1

Product Information

Calculated MW	88kDa/92kDa
Observed MW	93kDa
Buffer	PBS with 0.02% sodium azide, 50% glycerol, pH7.3.
Purify	Affinity purification
Dilution	WB 1:200-1:1000

Background

OTUD7B (OTU Deubiquitinase 7B) is a Protein Coding gene. Diseases associated with OTUD7B include Autoinflammation, Panniculitis, And Dermatitis Syndrome. Among its related pathways are Signaling by GPCR and Ovarian tumor domain proteases. Gene Ontology (GO) annotations related to this gene include cysteine-type peptidase activity and obsolete ubiquitin thiolesterase activity. An important paralog of this gene is OTUD7A.

For Research Use Only

Thank you for your recent purchase.

If you would like to learn more about antibodies, please visit www.elabscience.com.

**Focus on your research
 Service for life science**

Applications:WB-Western Blot IHC-Immunohistochemistry IF-Immunofluorescence IP-Immunoprecipitation FC-Flow cytometry ChIP-Chromatin Immunoprecipitation Reactivity: H-Human R-Rat M-Mouse Mk-Monkey Dg-Dog Ch-Chicken Hm-Hamster Rb-Rabbit Sh-Sheep Pg-Pig Z-Zebrafish X-Xenopus C-Cow.