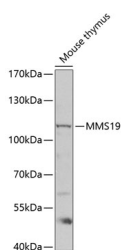


MMS19 Polyclonal Antibody

Catalog No.	E-AB-67630	Reactivity	M
Storage	Store at -20°C. Avoid freeze / thaw cycles.	Host	Rabbit
Applications	WB	Isotype	IgG

Note: Centrifuge before opening to ensure complete recovery of vial contents.

Images



Western blot analysis of extracts of Mouse thymus using MMS19 Polyclonal Antibody at dilution of 1:1000.

Immunogen Information

Immunogen	Recombinant fusion protein of human MMS19 (NP_071757.4).
GeneID	64210
Swissprot	Q96T76
Synonyms	MMS19,MET18,MMS19L,hMMS19

Product Information

Calculated MW	3kDa/35kDa/102kDa/108kDa/113kDa/115kDa
Observed MW	113kDa
Buffer	PBS with 0.02% sodium azide, 50% glycerol, pH7.3.
Purify	Affinity purification
Dilution	WB 1:200-1:2000

Background

MMS19 (MMS19 Homolog, Cytosolic Iron-Sulfur Assembly Component) is a Protein Coding gene. Diseases associated with MMS19 include Xeroderma Pigmentosum, Complementation Group D and Xeroderma Pigmentosum, Variant Type. Among its related pathways are Metabolism and Cytosolic iron-sulfur cluster assembly. Gene Ontology (GO) annotations related to this gene include binding and protein binding, bridging.

For Research Use Only

Thank you for your recent purchase.
 If you would like to learn more about antibodies, please visit www.elabscience.com.

**Focus on your research
 Service for life science**

Applications:WB-Western Blot IHC-Immunohistochemistry IF-Immunofluorescence IP-Immunoprecipitation FC-Flow cytometry ChIP-Chromatin Immunoprecipitation Reactivity: H-Human R-Rat M-Mouse Mk-Monkey Dg-Dog Ch-Chicken Hm-Hamster Rb-Rabbit Sh-Sheep Pg-Pig Z-Zebrafish X-Xenopus C-Cow.