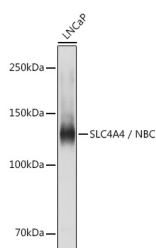


## SLC4A4 / NBC Polyclonal Antibody

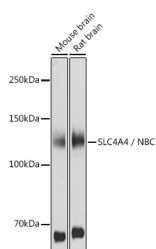
<b>Catalog No.</b>	E-AB-67647	<b>Reactivity</b>	H,M,R
<b>Storage</b>	Store at -20°C. Avoid freeze / thaw cycles.	<b>Host</b>	Rabbit
<b>Applications</b>	WB,IF	<b>Isotype</b>	IgG

**Note:** Centrifuge before opening to ensure complete recovery of vial contents.

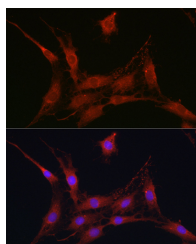
### Images



Western blot analysis of extracts of LNCaP cells using SLC4A4 / NBC Polyclonal Antibody at 1:1000 dilution.



Western blot analysis of extracts of various cell lines using SLC4A4 / NBC Polyclonal Antibody at 1:1000 dilution.



Immunofluorescence analysis of C6 cells using SLC4A4 / NBC Polyclonal antibody at dilution of 1:100 (40x lens). Blue: DAPI for nuclear staining.

### Immunogen Information

<b>Immunogen</b>	Recombinant fusion protein of human SLC4A4 / NBC
<b>GeneID</b>	8671
<b>Swissprot</b>	Q9Y6R1
<b>Synonyms</b>	SLC4A4,HNBC1,KNBC,NBC1,NBC2,NBCe1-A,SLC4A5,hhNMC,kNBC1,pNBC

### Product Information

<b>Calculated MW</b>	72kDa/112kDa/116kDa/121kDa/123kDa
<b>Observed MW</b>	135KDa
<b>Buffer</b>	PBS with 0.01% thiomersal,50% glycerol,pH7.3.
<b>Purify</b>	Affinity purification
<b>Dilution</b>	WB 1:500-1:2000,IF 1:50-1:200

### Background

This gene encodes a sodium bicarbonate cotransporter (NBC) involved in the regulation of bicarbonate secretion and absorption and intracellular pH. Mutations in this gene are associated with proximal renal tubular acidosis. Multiple transcript variants encoding different isoforms have been found for this gene.

#### For Research Use Only

Thank you for your recent purchase.  
 If you would like to learn more about antibodies, please visit [www.elabscience.com](http://www.elabscience.com).

**Focus on your research**  
**Service for life science**

Applications:WB-Western Blot IHC-Immunohistochemistry IF-Immunofluorescence IP-Immunoprecipitation FC-Flow cytometry ChIP-Chromatin Immunoprecipitation Reactivity: H-Human R-Rat M-Mouse Mk-Monkey Dg-Dog Ch-Chicken Hm-Hamster Rb-Rabbit Sh-Sheep Pg-Pig Z-Zebrafish X-Xenopus C-Cow.