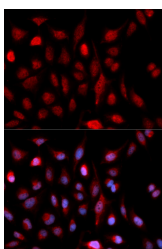


ASH2L Polyclonal Antibody

Catalog No.	E-AB-67656	Reactivity	H,M
Storage	Store at -20°C. Avoid freeze / thaw cycles.	Host	Rabbit
Applications	IF	Isotype	IgG

Note: Centrifuge before opening to ensure complete recovery of vial contents.

Images



Immunofluorescence analysis of U2OS cells using ASH2L Polyclonal Antibody

Immunogen Information

Immunogen	Recombinant fusion protein of human ASH2L (NP_001098684.1).
GeneID	9070
Swissprot	Q9UBL3
Synonyms	ASH2L,ASH2,ASH2L1,ASH2L2,Bre2

Product Information

Buffer	PBS with 0.02% sodium azide, 50% glycerol, pH7.3.
Purify	Affinity purification
Dilution	IF 1:20-1:50

Background

The human ASH2L gene encodes a 628 amino acid protein known as ASH2L1, or isoform 1, which contains a nuclear localization signal and PHD finger motif, suggesting that the gene product functions as a transcription regulator. Alternative splicing results in a shorter isoform 2, designated ASH2L2, which is missing the first 94 amino acid residues found in ASH2L1. Human ASH2L proteins are 60% homologous to *Drosophila ash2*, which positively regulates expression of certain genes in early development, and contain similar, but not identical, domains, including a zinc finger motif. ASH2L is highly expressed in fetal liver, testis and leukemia cell lines with erythroid and megakaryocytic potential, such as K562, Hel and Dami.

For Research Use Only

Thank you for your recent purchase.
 If you would like to learn more about antibodies, please visit www.elabscience.com.

**Focus on your research
 Service for life science**

Applications:WB-Western Blot IHC-Immunohistochemistry IF-Immunofluorescence IP-Immunoprecipitation FC-Flow cytometry ChIP-Chromatin Immunoprecipitation Reactivity: H-Human R-Rat M-Mouse Mk-Monkey Dg-Dog Ch-Chicken Hm-Hamster Rb-Rabbit Sh-Sheep Pg-Pig Z-Zebrafish X-Xenopus C-Cow.