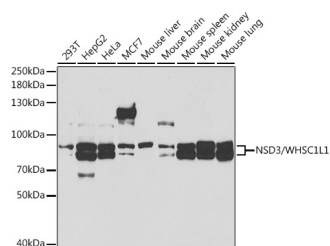


(KO Validated) WHSC1L1 Polyclonal Antibody

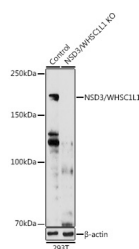
Catalog No.	E-AB-67680	Reactivity	H,M,R
Storage	Store at -20°C. Avoid freeze / thaw cycles.	Host	Rabbit
Applications	WB	Isotype	IgG

Note: Centrifuge before opening to ensure complete recovery of vial contents.

Images



Western blot analysis of extracts of various cell lines using NSD3/NSD3/WHSC1L1 Polyclonal Antibody at 1:1000 dilution.



Western blot analysis of extracts from normal (control) and NSD3/WHSC1L1 knockout (KO) 293T cells using NSD3/WHSC1L1 Polyclonal Antibody at 1:1000 dilution.

Immunogen Information

Immunogen	Recombinant fusion protein of human WHSC1L1
GeneID	54904
Swissprot	Q9BZ95
Synonyms	NSD3,KMT3F,KMT3G,WHISTLE,WHSC1L1,pp14328

Product Information

Calculated MW	72kDa/154kDa/156kDa/160kDa/161kDa
Observed MW	180KDa
Buffer	PBS with 0.01% thiomersal,50% glycerol,pH7.3.
Purify	Affinity purification
Dilution	WB 1:500-1:2000

Background

This gene is related to the Wolf-Hirschhorn syndrome candidate-1 gene and encodes a protein with PWWP (proline-tryptophan-tryptophan-proline) domains. This protein methylates histone H3 at lysine residues 4 and 27, which represses gene transcription. Two alternatively spliced variants have been described.

For Research Use Only

Thank you for your recent purchase.
 If you would like to learn more about antibodies, please visit www.elabscience.com.

**Focus on your research
 Service for life science**

Applications:WB-Western Blot IHC-Immunohistochemistry IF-Immunofluorescence IP-Immunoprecipitation FC-Flow cytometry ChIP-Chromatin Immunoprecipitation Reactivity: H-Human R-Rat M-Mouse Mk-Monkey Dg-Dog Ch-Chicken Hm-Hamster Rb-Rabbit Sh-Sheep Pg-Pig Z-Zebrafish X-Xenopus C-Cow.