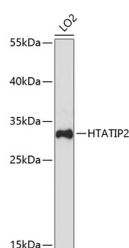


HTATIP2 Polyclonal Antibody

Catalog No.	E-AB-67708	Reactivity	H
Storage	Store at -20°C. Avoid freeze / thaw cycles.	Host	Rabbit
Applications	WB	Isotype	IgG

Note: Centrifuge before opening to ensure complete recovery of vial contents.

Images



Western blot analysis of extracts of LO2 cells using HTATIP2 Polyclonal Antibody at dilution of 1:3000.

Immunogen Information

Immunogen	A synthetic peptide of human HTATIP2 (NP_006401.3).
GeneID	10553
Swissprot	Q9BUP3
Synonyms	HTATIP2,CC3,SDR44U1,TIP30

Product Information

Calculated MW	14kDa/27kDa/30kDa
Observed MW	27kDa
Buffer	PBS with 0.02% sodium azide, 50% glycerol, pH7.3.
Purify	Affinity purification
Dilution	WB 1:500-1:2000

Background

TIP30 (30 kDa HIV-1 TAT-interacting protein), also known as HTATIP2 (HIV-1 TAT-interactive protein 2) or CC3, is a ubiquitously expressed protein that functions as an oxidoreductase. It acts as a tumor suppressor participating in metabolic suppression, inhibition of angiogenesis and induction of apoptosis.

For Research Use Only

Thank you for your recent purchase.
 If you would like to learn more about antibodies, please visit www.elabscience.com.

**Focus on your research
 Service for life science**

Applications:WB-Western Blot IHC-Immunohistochemistry IF-Immunofluorescence IP-Immunoprecipitation FC-Flow cytometry ChIP-Chromatin Immunoprecipitation Reactivity: H-Human R-Rat M-Mouse Mk-Monkey Dg-Dog Ch-Chicken Hm-Hamster Rb-Rabbit Sh-Sheep Pg-Pig Z-Zebrafish X-Xenopus C-Cow.