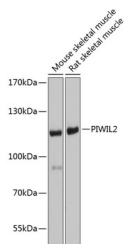


PIWIL2 Polyclonal Antibody

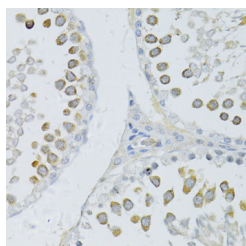
Catalog No.	E-AB-67720	Reactivity	M,R
Storage	Store at -20°C. Avoid freeze / thaw cycles.	Host	Rabbit
Applications	WB,IHC	Isotype	IgG

Note: Centrifuge before opening to ensure complete recovery of vial contents.

Images



Western blot analysis of extracts of various cell lines using PIWIL2 Polyclonal Antibody at dilution of 1:1000.



Immunohistochemistry of paraffin-embedded Rat testis using PIWIL2 Polyclonal Antibody at dilution of 1:100 (40x lens).

Immunogen Information

Immunogen	Recombinant protein of mouse PIWIL2
GeneID	57746
Swissprot	Q8CDG1
Synonyms	PIWIL2,CT80,HILI,PIWIL1L,mili

Product Information

Calculated MW	105kDa/109kDa
Observed MW	110kDa
Buffer	PBS with 0.02% sodium azide, 50% glycerol, pH7.3.
Purify	Affinity purification
Dilution	WB 1:1000-1:3000 IHC 1:100-1:200

Background

PIWIL2 (Piwi Like RNA-Mediated Gene Silencing 2) is a Protein Coding gene. Diseases associated with PIWIL2 include Caplan's Syndrome and Cycloplegia. Among its related pathways are Mitotic Prophase and PIWI-interacting RNA (piRNA) biogenesis. Gene Ontology (GO) annotations related to this gene include nucleic acid binding and piRNA binding. An important paralog of this gene is PIWIL1.

For Research Use Only

Thank you for your recent purchase.
 If you would like to learn more about antibodies, please visit www.elabscience.com.

**Focus on your research
 Service for life science**

Applications:WB-Western Blot IHC-Immunohistochemistry IF-Immunofluorescence IP-Immunoprecipitation FC-Flow cytometry ChIP-Chromatin Immunoprecipitation Reactivity: H-Human R-Rat M-Mouse Mk-Monkey Dg-Dog Ch-Chicken Hm-Hamster Rb-Rabbit Sh-Sheep Pg-Pig Z-Zebrafish X-Xenopus C-Cow.