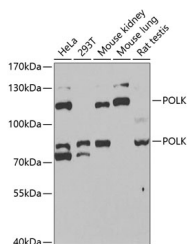


## POLK Polyclonal Antibody

<b>Catalog No.</b>	E-AB-67725	<b>Reactivity</b>	H,M,R
<b>Storage</b>	Store at -20°C. Avoid freeze / thaw cycles.	<b>Host</b>	Rabbit
<b>Applications</b>	WB	<b>Isotype</b>	IgG

**Note:** Centrifuge before opening to ensure complete recovery of vial contents.

### Images



Western blot analysis of extracts of various cell lines using POLK Polyclonal Antibody at 1:1000 dilution.

### Immunogen Information

<b>Immunogen</b>	Recombinant fusion protein of human POLK
<b>GeneID</b>	51426
<b>Swissprot</b>	Q9UBT6
<b>Synonyms</b>	POLK,DINB1,DINP,POLQ

### Product Information

<b>Calculated MW</b>	42kDa/52kDa/54kDa/55kDa/76kDa/88kDa/98kDa
<b>Observed MW</b>	80kDa/110kDa
<b>Buffer</b>	PBS with 0.02% sodium azide,50% glycerol,pH7.3.
<b>Purify</b>	Affinity purification
<b>Dilution</b>	WB 1:500-1:2000

### Background

This gene encodes a member of the DNA polymerase type-Y family of proteins. The encoded protein is a specialized DNA polymerase that catalyzes translesion DNA synthesis, which allows DNA replication in the presence of DNA lesions. Human cell lines lacking a functional copy of this gene exhibit impaired genome integrity and enhanced susceptibility to oxidative damage. Mutations in this gene that impair enzyme activity may be associated with prostate cancer in human patients. [provided by RefSeq, Sep 2016]

#### For Research Use Only

Thank you for your recent purchase.  
 If you would like to learn more about antibodies, please visit [www.elabscience.com](http://www.elabscience.com).

**Focus on your research  
 Service for life science**

Applications:WB-Western Blot IHC-Immunohistochemistry IF-Immunofluorescence IP-Immunoprecipitation FC-Flow cytometry ChIP-Chromatin Immunoprecipitation Reactivity: H-Human R-Rat M-Mouse Mk-Monkey Dg-Dog Ch-Chicken Hm-Hamster Rb-Rabbit Sh-Sheep Pg-Pig Z-Zebrafish X-Xenopus C-Cow.