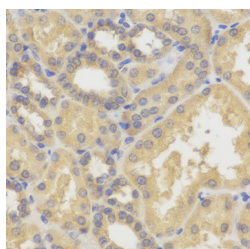


SMYD5 Polyclonal Antibody

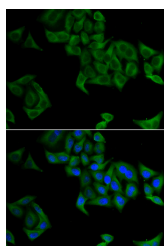
Catalog No.	E-AB-67734	Reactivity	H,M
Storage	Store at -20°C. Avoid freeze / thaw cycles.	Host	Rabbit
Applications	IHC,IF	Isotype	IgG

Note: Centrifuge before opening to ensure complete recovery of vial contents.

Images



Immunohistochemistry of paraffin-embedded Human kidney using SMYD5 Polyclonal Antibody



Immunofluorescence analysis of A549 cells using SMYD5 Polyclonal Antibody

Immunogen Information

Immunogen	Recombinant protein of human SMYD5
GeneID	10322
Swissprot	Q6GMV2
Synonyms	SMYD5,NN8-4AG,RAI15,RRG1,ZMYND23

Product Information

Buffer	PBS with 0.02% sodium azide, 50% glycerol, pH7.3.
Purify	Affinity purification
Dilution	IHC 1:50-1:100 IF 1:50-1:100

Background

The SMYD (SET and MYND domain) family of lysine methyltransferases (KMTs) plays pivotal roles in various cellular processes, including gene expression regulation and DNA damage response. SMYD1, SMYD2, and SMYD3 share a high degree of sequence homology and, with the exception of SMYD5, human SMYD proteins harbor at least one C-terminal tetratricopeptide repeat (TPR) domain. The SMYD proteins have been found to be linked to various cancers and biological processes.

For Research Use Only

Thank you for your recent purchase.
 If you would like to learn more about antibodies, please visit www.elabscience.com.

**Focus on your research
 Service for life science**

Applications: WB-Western Blot IHC-Immunohistochemistry IF-Immunofluorescence IP-Immunoprecipitation FC-Flow cytometry ChIP-Chromatin Immunoprecipitation Reactivity: H-Human R-Rat M-Mouse Mk-Monkey Dg-Dog Ch-Chicken Hm-Hamster Rb-Rabbit Sh-Sheep Pg-Pig Z-Zebrafish X-Xenopus C-Cow.