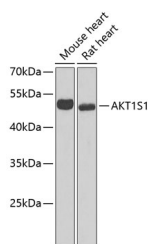


## AKT1S1 Polyclonal Antibody

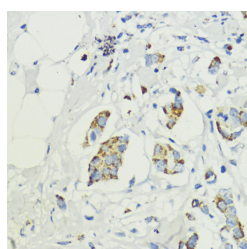
<b>Catalog No.</b>	E-AB-67741	<b>Reactivity</b>	H,M,R
<b>Storage</b>	Store at -20°C. Avoid freeze / thaw cycles.	<b>Host</b>	Rabbit
<b>Applications</b>	WB,IHC,IF	<b>Isotype</b>	IgG

**Note:** Centrifuge before opening to ensure complete recovery of vial contents.

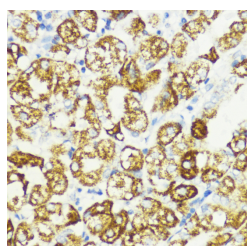
### Images



Western blot analysis of extracts of various cell lines using AKT1S1 Polyclonal Antibody at dilution of 1:1000.



Immunohistochemistry of paraffin-embedded Human mammary cancer using AKT1S1 Polyclonal Antibody at dilution of 1:200 (40x lens).



Immunohistochemistry of paraffin-embedded Human stomach using AKT1S1 Polyclonal Antibody at dilution of 1:200 (40x lens).

### Immunogen Information

<b>Immunogen</b>	Recombinant fusion protein of human AKT1S1 (NP_115751.3).
<b>GeneID</b>	84335
<b>Swissprot</b>	Q96B36
<b>Synonyms</b>	AKT1S1,Lobe,PRAS40

### Product Information

<b>Calculated MW</b>	13kDa/27kDa/29kDa
<b>Observed MW</b>	50kDa
<b>Buffer</b>	PBS with 0.02% sodium azide, 50% glycerol, pH7.3.
<b>Purify</b>	Affinity purification
<b>Dilution</b>	WB 1:500-1:2000 IHC 1:50-1:100 IF 1:50-1:100

### Background

AKT1S1 (AKT1 Substrate 1) is a Protein Coding gene. Diseases associated with AKT1S1 include Localized Pulmonary Fibrosis and Tuberous Sclerosis 1. Among its related pathways are RET signaling and Respiratory electron transport, ATP synthesis by chemiosmotic coupling, and heat production by uncoupling proteins.

#### For Research Use Only

Thank you for your recent purchase.  
 If you would like to learn more about antibodies, please visit [www.elabscience.com](http://www.elabscience.com).

**Focus on your research  
 Service for life science**

Applications:WB-Western Blot IHC-Immunohistochemistry IF-Immunofluorescence IP-Immunoprecipitation FC-Flow cytometry ChIP-Chromatin Immunoprecipitation Reactivity: H-Human R-Rat M-Mouse Mk-Monkey Dg-Dog Ch-Chicken Hm-Hamster Rb-Rabbit Sh-Sheep Pg-Pig Z-Zebrafish X-Xenopus C-Cow.