

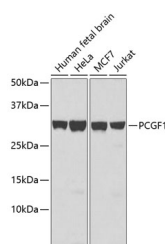
PCGF1 Polyclonal Antibody

Catalog No. E-AB-67746
Storage Store at -20°C. Avoid freeze / thaw cycles.
Applications WB,IF

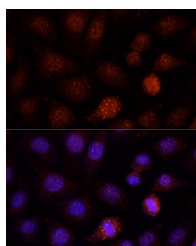
Reactivity H,M
Host Rabbit
Isotype IgG

Note: Centrifuge before opening to ensure complete recovery of vial contents.

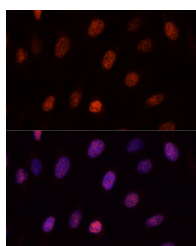
Images



Western blot analysis of extracts of various cell lines using PCGF1 Polyclonal Antibody.



Immunofluorescence analysis of L-929 cells using PCGF1 Polyclonal Antibody at dilution of 1:100. Blue: DAPI for nuclear staining.



Immunofluorescence analysis of U-2OS cells using PCGF1 Polyclonal Antibody at dilution of 1:100. Blue: DAPI for nuclear staining.

Immunogen Information

Immunogen Recombinant fusion protein of human PCGF1 (NP_116062.2).
GeneID 84759
Swissprot Q9BSM1
Synonyms PCGF1,2010002K04Rik,NSPC1,RNF3A-2,RNF68

Product Information

Calculated MW 20kDa/30kDa
Observed MW 30kDa
Buffer PBS with 0.02% sodium azide, 50% glycerol, pH7.3.
Purify Affinity purification
Dilution WB 1:500-1:2000 IF 1:50-1:200

Background

PCGF1 (Polycomb Group Ring Finger 1) is a Protein Coding gene. Diseases associated with PCGF1 include Bardet-Biedl Syndrome 2 and Kidney Clear Cell Sarcoma. Among its related pathways are Signaling pathways regulating pluripotency of stem cells. Gene Ontology (GO) annotations related to this gene include protein C-terminus binding. An important paralog of this gene is PCGF6.

For Research Use Only

Thank you for your recent purchase.
If you would like to learn more about antibodies, please visit www.elabscience.com.

Focus on your research Service for life science

Applications: WB-Western Blot IHC-Immunohistochemistry IF-Immunofluorescence IP-Immunoprecipitation FC-Flow cytometry ChIP-Chromatin Immunoprecipitation Reactivity: H-Human R-Rat M-Mouse Mk-Monkey Dg-Dog Ch-Chicken Hm-Hamster Rb-Rabbit Sh-Sheep Pg-Pig Z-Zebrafish X-Xenopus C-Cow.