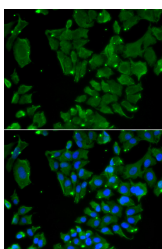


DBN1 Polyclonal Antibody

Catalog No.	E-AB-67750	Reactivity	H
Storage	Store at -20°C. Avoid freeze / thaw cycles.	Host	Rabbit
Applications	IF	Isotype	IgG

Note: Centrifuge before opening to ensure complete recovery of vial contents.

Images



Immunofluorescence analysis of HeLa cells using DBN1 Polyclonal Antibody

Immunogen Information

Immunogen	Recombinant fusion protein of human DBN1 (NP_004386.2).
GeneID	1627
Swissprot	Q16643
Synonyms	DBN1,D0S117E,drebrin

Product Information

Buffer	PBS with 0.02% sodium azide, 50% glycerol, pH7.3.
Purify	Affinity purification
Dilution	IF 1:50-1:100

Background

The protein encoded by this gene is a cytoplasmic actin-binding protein thought to play a role in the process of neuronal growth. It is a member of the drebrin family of proteins that are developmentally regulated in the brain. A decrease in the amount of this protein in the brain has been implicated as a possible contributing factor in the pathogenesis of memory disturbance in Alzheimer's disease. At least two alternative splice variants encoding different protein isoforms have been described for this gene.

For Research Use Only

Thank you for your recent purchase.
 If you would like to learn more about antibodies, please visit www.elabscience.com.

**Focus on your research
 Service for life science**

Applications:WB-Western Blot IHC-Immunohistochemistry IF-Immunofluorescence IP-Immunoprecipitation FC-Flow cytometry ChIP-Chromatin Immunoprecipitation Reactivity: H-Human R-Rat M-Mouse Mk-Monkey Dg-Dog Ch-Chicken Hm-Hamster Rb-Rabbit Sh-Sheep Pg-Pig Z-Zebrafish X-Xenopus C-Cow.