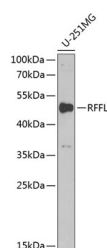


## RFFL Polyclonal Antibody

<b>Catalog No.</b>	E-AB-67763	<b>Reactivity</b>	H,M,R
<b>Storage</b>	Store at -20°C. Avoid freeze / thaw cycles.	<b>Host</b>	Rabbit
<b>Applications</b>	WB	<b>Isotype</b>	IgG

**Note:** Centrifuge before opening to ensure complete recovery of vial contents.

### Images



Western blot analysis of extracts of U-251MG cells using RFFL Polyclonal Antibody at dilution of 1:1000.

### Immunogen Information

<b>Immunogen</b>	Recombinant fusion protein of human RFFL (NP_001017368.1).
<b>GeneID</b>	117584
<b>Swissprot</b>	Q8WZ73
<b>Synonyms</b>	RFFL,CARP-2,CARP2,FRING,RIFIFYLIN,RNF189,RNF34L

### Product Information

<b>Calculated MW</b>	36kDa/39kDa/40kDa
<b>Observed MW</b>	50kDa
<b>Buffer</b>	PBS with 0.02% sodium azide, 50% glycerol, pH7.3.
<b>Purify</b>	Affinity purification
<b>Dilution</b>	WB 1:500-1:2000

### Background

RFFL (Ring Finger And FYVE Like Domain Containing E3 Ubiquitin Protein Ligase) is a Protein Coding gene. Diseases associated with RFFL include Noonan Syndrome 1. Among its related pathways are Gene Expression and Regulation of TP53 Expression and Degradation. Gene Ontology (GO) annotations related to this gene include protein kinase binding and ubiquitin protein ligase binding. An important paralog of this gene is ENSG00000267618.

#### For Research Use Only

Thank you for your recent purchase.  
 If you would like to learn more about antibodies, please visit [www.elabscience.com](http://www.elabscience.com).

**Focus on your research  
 Service for life science**

Applications:WB-Western Blot IHC-Immunohistochemistry IF-Immunofluorescence IP-Immunoprecipitation FC-Flow cytometry ChIP-Chromatin Immunoprecipitation Reactivity: H-Human R-Rat M-Mouse Mk-Monkey Dg-Dog Ch-Chicken Hm-Hamster Rb-Rabbit Sh-Sheep Pg-Pig Z-Zebrafish X-Xenopus C-Cow.