

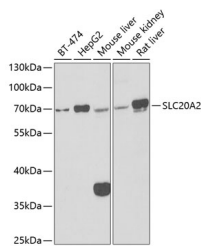
SLC20A2 Polyclonal Antibody

Catalog No. E-AB-67782
Storage Store at -20°C. Avoid freeze / thaw cycles.
Applications WB

Reactivity H,M,R
Host Rabbit
Isotype IgG

Note: Centrifuge before opening to ensure complete recovery of vial contents.

Images



Western blot analysis of extracts of various cell lines using SLC20A2 Polyclonal Antibody at 1:1000 dilution.

Immunogen Information

Immunogen Recombinant fusion protein of human SLC20A2
GeneID 6575
Swissprot Q08357
Synonyms SLC20A2, GLVR-2, GLVR2, IBGC1, IBGC3, MLVAR, PIT-2, PIT2, RAM1, Ram-1

Product Information

Calculated MW 70kDa
Observed MW 70kDa
Buffer PBS with 0.02% sodium azide, 50% glycerol, pH7.3.
Purify Affinity purification
Dilution WB 1:500-1:2000

Background

This gene encodes a member of the inorganic phosphate transporter family. The encoded protein is a type 3 sodium-dependent phosphate symporter that plays an important role in phosphate homeostasis by mediating cellular phosphate uptake. The encoded protein also confers susceptibility to viral infection as a gamma-retroviral receptor. Mutations in this gene may play a role in familial idiopathic basal ganglia calcification. Alternatively spliced transcript variants encoding multiple isoforms have been observed for this gene.

For Research Use Only

Thank you for your recent purchase.
If you would like to learn more about antibodies, please visit www.elabscience.com.

Focus on your research Service for life science

Applications: WB-Western Blot IHC-Immunohistochemistry IF-Immunofluorescence IP-Immunoprecipitation FC-Flow cytometry ChIP-Chromatin Immunoprecipitation Reactivity: H-Human R-Rat M-Mouse Mk-Monkey Dg-Dog Ch-Chicken Hm-Hamster Rb-Rabbit Sh-Sheep Pg-Pig Z-Zebrafish X-Xenopus C-Cow.