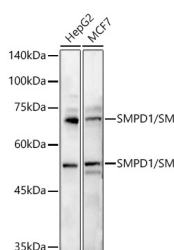


SMPD1 / ASM Polyclonal Antibody

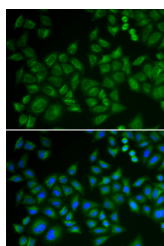
Catalog No.	E-AB-67785	Reactivity	H,M,R
Storage	Store at -20°C. Avoid freeze / thaw cycles.	Host	Rabbit
Applications	WB,IF	Isotype	IgG

Note: Centrifuge before opening to ensure complete recovery of vial contents.

Images



Western blot analysis of extracts of various cell lines using SMPD1 / ASM Polyclonal Antibody at 1:500 dilution.



Immunofluorescence analysis of HeLa cells using SMPD1 / ASM Polyclonal Antibody Blue: DAPI for nuclear staining.

Immunogen Information

Immunogen	Recombinant fusion protein of human SMPD1 / ASM
GeneID	6609
Swissprot	P17405
Synonyms	SMPD1,ASM,ASMASE,NPD,SMPD1/ASM

Product Information

Calculated MW	63kDa/64kDa/69kDa
Observed MW	55KDa/70KDa
Buffer	PBS with 0.01% thiomersal,50% glycerol,pH7.3.
Purify	Affinity purification
Dilution	WB 1:500-1:2000,IF 1:10-1:100

Background

The protein encoded by this gene is a lysosomal acid sphingomyelinase that converts sphingomyelin to ceramide. The encoded protein also has phospholipase C activity. Defects in this gene are a cause of Niemann-Pick disease type A (NPA) and Niemann-Pick disease type B (NPB). Multiple transcript variants encoding different isoforms have been identified.

For Research Use Only

Thank you for your recent purchase.
 If you would like to learn more about antibodies, please visit www.elabscience.com.

**Focus on your research
 Service for life science**

Applications:WB-Western Blot IHC-Immunohistochemistry IF-Immunofluorescence IP-Immunoprecipitation FC-Flow cytometry ChIP-Chromatin Immunoprecipitation Reactivity: H-Human R-Rat M-Mouse Mk-Monkey Dg-Dog Ch-Chicken Hm-Hamster Rb-Rabbit Sh-Sheep Pg-Pig Z-Zebrafish X-Xenopus C-Cow.