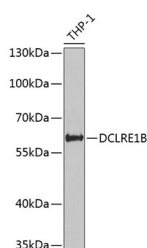


DCLRE1B Polyclonal Antibody

Catalog No.	E-AB-67792	Reactivity	H,M
Storage	Store at -20°C. Avoid freeze / thaw cycles.	Host	Rabbit
Applications	WB	Isotype	IgG

Note: Centrifuge before opening to ensure complete recovery of vial contents.

Images



Western blot analysis of extracts of THP-1 cells using DCLRE1B Polyclonal Antibody at dilution of 1:1000.

Immunogen Information

Immunogen	Recombinant fusion protein of human DCLRE1B (NP_073747.1).
GeneID	64858
Swissprot	Q9H816
Synonyms	DCLRE1B, APOLLO, SNM1B, SNMIB

Product Information

Calculated MW	60kDa
Observed MW	60kDa
Buffer	PBS with 0.02% sodium azide, 50% glycerol, pH7.3.
Purify	Affinity purification
Dilution	WB 1:500-1:2000

Background

DCLRE1B (DNA Cross-Link Repair 1B) is a Protein Coding gene. Diseases associated with DCLRE1B include Hoyeraal Hreidarsson Syndrome and Dyskeratosis Congenita. Among its related pathways are Fanconi anemia pathway and DNA Double-Strand Break Repair. Gene Ontology (GO) annotations related to this gene include 5'-3' exonuclease activity. An important paralog of this gene is DCLRE1C.

For Research Use Only

Thank you for your recent purchase.

If you would like to learn more about antibodies, please visit www.elabscience.com.

**Focus on your research
 Service for life science**

Applications: WB-Western Blot IHC-Immunohistochemistry IF-Immunofluorescence IP-Immunoprecipitation FC-Flow cytometry ChIP-Chromatin Immunoprecipitation Reactivity: H-Human R-Rat M-Mouse Mk-Monkey Dg-Dog Ch-Chicken Hm-Hamster Rb-Rabbit Sh-Sheep Pg-Pig Z-Zebrafish X-Xenopus C-Cow.