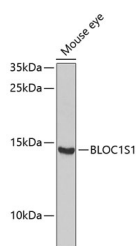


## BLOC1S1 Polyclonal Antibody

<b>Catalog No.</b>	E-AB-67801	<b>Reactivity</b>	M
<b>Storage</b>	Store at -20°C. Avoid freeze / thaw cycles.	<b>Host</b>	Rabbit
<b>Applications</b>	WB	<b>Isotype</b>	IgG

**Note:** Centrifuge before opening to ensure complete recovery of vial contents.

### Images



Western blot analysis of extracts of Mouse eye using BLOC1S1 Polyclonal Antibody at dilution of 1:1000.

### Immunogen Information

<b>Immunogen</b>	Recombinant fusion protein of human BLOC1S1 (NP_001478.2).
<b>GeneID</b>	2647
<b>Swissprot</b>	P78537
<b>Synonyms</b>	BLOC1S1,BLOS1,BORCS1,GCN5L1,MICoA,RT14

### Product Information

<b>Calculated MW</b>	14kDa/17kDa
<b>Observed MW</b>	14kDa
<b>Buffer</b>	PBS with 0.02% sodium azide, 50% glycerol, pH7.3.
<b>Purify</b>	Affinity purification
<b>Dilution</b>	WB 1:500-1:2000

### Background

BLOC1S1 (Biogenesis Of Lysosomal Organelles Complex 1 Subunit 1) is a Protein Coding gene. Diseases associated with BLOC1S1 include Dyscalculia and Hermansky-Pudlak Syndrome 5. Among its related pathways are Clathrin derived vesicle budding and Vesicle-mediated transport. An important paralog of this gene is ENSG00000258311.

#### For Research Use Only

Thank you for your recent purchase.

If you would like to learn more about antibodies, please visit [www.elabscience.com](http://www.elabscience.com).

**Focus on your research  
 Service for life science**

Applications:WB-Western Blot IHC-Immunohistochemistry IF-Immunofluorescence IP-Immunoprecipitation FC-Flow cytometry ChIP-Chromatin Immunoprecipitation Reactivity: H-Human R-Rat M-Mouse Mk-Monkey Dg-Dog Ch-Chicken Hm-Hamster Rb-Rabbit Sh-Sheep Pg-Pig Z-Zebrafish X-Xenopus C-Cow.