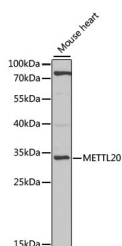


METTL20 Polyclonal Antibody

Catalog No.	E-AB-67828	Reactivity	M,R
Storage	Store at -20°C. Avoid freeze / thaw cycles.	Host	Rabbit
Applications	WB	Isotype	IgG

Note: Centrifuge before opening to ensure complete recovery of vial contents.

Images



Western blot analysis of extracts of mouse heart using METTL20 Polyclonal Antibody at 1:1000 dilution.

Immunogen Information

Immunogen	Recombinant fusion protein of human METTL20
GeneID	254013
Swissprot	Q8IXQ9
Synonyms	ETFBKMT,C12orf72,ETFB-KMT,METTL20

Product Information

Calculated MW	29kDa
Observed MW	33kDa
Buffer	PBS with 0.02% sodium azide,50% glycerol,pH7.3.
Purify	Affinity purification
Dilution	WB 1:500-1:2000

Background

Protein-lysine methyltransferase that selectively trimethylates the flavoprotein ETFB in mitochondria. Thereby, may negatively regulate the function of ETFB in electron transfer from Acyl-CoA dehydrogenases to the main respiratory chain.

For Research Use Only

Thank you for your recent purchase.

If you would like to learn more about antibodies, please visit www.elabscience.com.

**Focus on your research
 Service for life science**

Applications:WB-Western Blot IHC-Immunohistochemistry IF-Immunofluorescence IP-Immunoprecipitation FC-Flow cytometry ChIP-Chromatin Immunoprecipitation Reactivity: H-Human R-Rat M-Mouse Mk-Monkey Dg-Dog Ch-Chicken Hm-Hamster Rb-Rabbit Sh-Sheep Pg-Pig Z-Zebrafish X-Xenopus C-Cow.