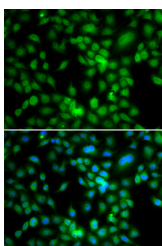


SYCE1 Polyclonal Antibody

Catalog No.	E-AB-67836	Reactivity	H,M,R
Storage	Store at -20°C. Avoid freeze / thaw cycles.	Host	Rabbit
Applications	IF	Isotype	IgG

Note: Centrifuge before opening to ensure complete recovery of vial contents.

Images



Immunofluorescence analysis of MCF-7 cells using SYCE1 Polyclonal Antibody

Immunogen Information

Immunogen	Recombinant fusion protein of human SYCE1 (NP_001137236.1).
GeneID	93426
Swissprot	Q8N0S2
Synonyms	SYCE1,C10orf94,CT76,POF12,SPGF15

Product Information

Buffer	PBS with 0.02% sodium azide, 50% glycerol, pH7.3.
Purify	Affinity purification
Dilution	IF 1:50-1:100

Background

This gene encodes a member of the synaptonemal complex, which links homologous chromosomes during prophase I of meiosis. The tripartite structure of the complex is highly conserved amongst metazoans. It consists of two lateral elements and a central region formed by transverse elements and a central element. The protein encoded by this gene localizes to the central element and is required for initiation and elongation of the synapsis. Allelic variants of this gene have been associated with premature ovarian failure and spermatogenic failure. Alternative splicing results in multiple transcript variants.

For Research Use Only

Thank you for your recent purchase.

If you would like to learn more about antibodies, please visit www.elabscience.com.

**Focus on your research
Service for life science**

Applications:WB-Western Blot IHC-Immunohistochemistry IF-Immunofluorescence IP-Immunoprecipitation FC-Flow cytometry ChIP-Chromatin Immunoprecipitation Reactivity: H-Human R-Rat M-Mouse Mk-Monkey Dg-Dog Ch-Chicken Hm-Hamster Rb-Rabbit Sh-Sheep Pg-Pig Z-Zebrafish X-Xenopus C-Cow.