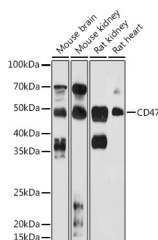


CD47 Polyclonal Antibody

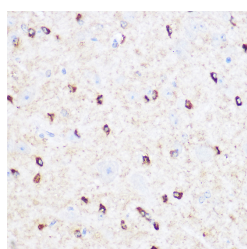
| | | | |
|---------------------|---|-------------------|--------|
| Catalog No. | E-AB-67849 | Reactivity | H,M,R |
| Storage | Store at -20°C. Avoid freeze / thaw cycles. | Host | Rabbit |
| Applications | WB,IHC | Isotype | IgG |

Note: Centrifuge before opening to ensure complete recovery of vial contents.

Images



Western blot analysis of extracts of various cell lines using CD47 Polyclonal Antibody at 1:1000 dilution.



Immunohistochemistry of paraffin-embedded Mouse brain using CD47 Polyclonal Antibody at dilution of 1:100 (40x lens). Perform microwave antigen retrieval with 10 mM Tris/EDTA buffer pH 9.0 before commencing with IHC staining protocol.

Immunogen Information

| | |
|------------------|--|
| Immunogen | Recombinant fusion protein of human CD47 |
| GeneID | 961 |
| Swissprot | Q08722 |
| Synonyms | CD47,IAP,MER6,OA3 |

Product Information

| | |
|----------------------|---|
| Calculated MW | 31kDa/33kDa/35kDa |
| Observed MW | 45-50kDa |
| Buffer | PBS with 0.05% proclin300,50% glycerol,pH7.3. |
| Purify | Affinity purification |
| Dilution | WB 1:500-1:2000,IHC 1:50-1:200 |

Background

This gene encodes a membrane protein, which is involved in the increase in intracellular calcium concentration that occurs upon cell adhesion to extracellular matrix. The encoded protein is also a receptor for the C-terminal cell binding domain of thrombospondin, and it may play a role in membrane transport and signal transduction. This gene has broad tissue distribution, and is reduced in expression on Rh erythrocytes. Alternatively spliced transcript variants have been found for this gene.

For Research Use Only

Thank you for your recent purchase.
 If you would like to learn more about antibodies, please visit www.elabscience.com.

**Focus on your research
 Service for life science**

Applications:WB-Western Blot IHC-Immunohistochemistry IF-Immunofluorescence IP-Immunoprecipitation FC-Flow cytometry ChIP-Chromatin Immunoprecipitation Reactivity: H-Human R-Rat M-Mouse Mk-Monkey Dg-Dog Ch-Chicken Hm-Hamster Rb-Rabbit Sh-Sheep Pg-Pig Z-Zebrafish X-Xenopus C-Cow.