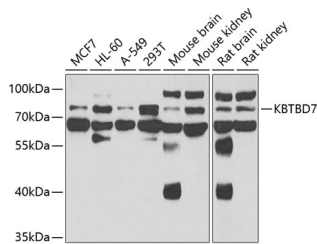


KBTBD7 Polyclonal Antibody

Catalog No.	E-AB-67864	Reactivity	H,M,R
Storage	Store at -20°C. Avoid freeze / thaw cycles.	Host	Rabbit
Applications	WB	Isotype	IgG

Note: Centrifuge before opening to ensure complete recovery of vial contents.

Images



Western blot analysis of extracts of various cell lines using KBTBD7 Polyclonal Antibody at 1:1000 dilution.

Immunogen Information

Immunogen	Recombinant fusion protein of human KBTBD7
GeneID	84078
Swissprot	Q8WVZ9
Synonyms	KBTBD7

Product Information

Calculated MW	77kDa
Observed MW	77kDa
Buffer	PBS with 0.02% sodium azide,50% glycerol,pH7.3.
Purify	Affinity purification
Dilution	WB 1:500-1:2000

Background

The protein encoded by this gene is a transcriptional activator, having been shown to increase the transcription of activator protein-1 and serum response element. The encoded protein can also form a complex with KBTBD6 and CUL3, which regulates the ubiquitylation and degradation of TIAM1, which is a regulator of RAC1. [provided by RefSeq, Jul 2016]

For Research Use Only

Thank you for your recent purchase.
 If you would like to learn more about antibodies, please visit www.elabscience.com.

**Focus on your research
 Service for life science**

Applications:WB-Western Blot IHC-Immunohistochemistry IF-Immunofluorescence IP-Immunoprecipitation FC-Flow cytometry ChIP-Chromatin Immunoprecipitation Reactivity: H-Human R-Rat M-Mouse Mk-Monkey Dg-Dog Ch-Chicken Hm-Hamster Rb-Rabbit Sh-Sheep Pg-Pig Z-Zebrafish X-Xenopus C-Cow.