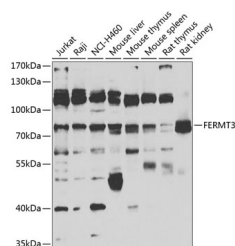


FERMT3 Polyclonal Antibody

Catalog No.	E-AB-67917	Reactivity	H,M,R
Storage	Store at -20°C. Avoid freeze / thaw cycles.	Host	Rabbit
Applications	WB	Isotype	IgG

Note: Centrifuge before opening to ensure complete recovery of vial contents.

Images



Western blot analysis of extracts of various cell lines using FERMT3 Polyclonal Antibody at 1:1000 dilution.

Immunogen Information

Immunogen	Recombinant fusion protein of human FERMT3
GeneID	83706
Swissprot	Q86UX7
Synonyms	FERMT3,KIND3,MIG-2,MIG2B,UNC112C,URP2,URP2SF

Product Information

Calculated MW	75kDa
Observed MW	76kDa
Buffer	PBS with 0.02% sodium azide,50% glycerol,pH7.3.
Purify	Affinity purification
Dilution	WB 1:500-1:2000

Background

Kindlins are a small family of proteins that mediate protein-protein interactions involved in integrin activation and thereby have a role in cell adhesion, migration, differentiation, and proliferation. The protein encoded by this gene has a key role in the regulation of hemostasis and thrombosis. This protein may also help maintain the membrane skeleton of erythrocytes. Mutations in this gene cause the autosomal recessive leukocyte adhesion deficiency syndrome-III (LAD-III). Alternative splicing results in multiple transcript variants encoding distinct isoforms.

For Research Use Only

Thank you for your recent purchase.
 If you would like to learn more about antibodies, please visit www.elabscience.com.

**Focus on your research
 Service for life science**

Applications:WB-Western Blot IHC-Immunohistochemistry IF-Immunofluorescence IP-Immunoprecipitation FC-Flow cytometry ChIP-Chromatin Immunoprecipitation Reactivity: H-Human R-Rat M-Mouse Mk-Monkey Dg-Dog Ch-Chicken Hm-Hamster Rb-Rabbit Sh-Sheep Pg-Pig Z-Zebrafish X-Xenopus C-Cow.