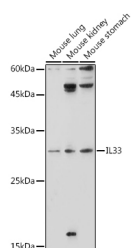


IL33 Polyclonal Antibody

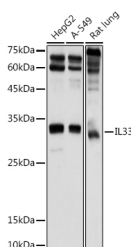
| | | | |
|---------------------|---|-------------------|--------|
| Catalog No. | E-AB-67944 | Reactivity | H,M,R |
| Storage | Store at -20°C. Avoid freeze / thaw cycles. | Host | Rabbit |
| Applications | WB | Isotype | IgG |

Note: Centrifuge before opening to ensure complete recovery of vial contents.

Images



Western blot analysis of extracts of various cell lines using IL33 Polyclonal Antibody at 1:1000 dilution.



Western blot analysis of extracts of various cell lines using IL33 Polyclonal Antibody at 1:1000 dilution.

Immunogen Information

| | |
|------------------|--|
| Immunogen | Recombinant fusion protein of human IL33 |
| GeneID | 90865 |
| Swissprot | O95760 |
| Synonyms | IL33,C9orf26,DVS27,IL1F11,NF-HEV,NFEHEV |

Product Information

| | |
|----------------------|---|
| Calculated MW | 16kDa/25kDa/26kDa/30kDa |
| Observed MW | 33KDa |
| Buffer | PBS with 0.05% proclin300,50% glycerol,pH7.3. |
| Purify | Affinity purification |
| Dilution | WB 1:200-1:2000 |

Background

The protein encoded by this gene is a cytokine that binds to the IL1RL1/ST2 receptor. The encoded protein is involved in the maturation of Th2 cells and the activation of mast cells, basophils, eosinophils and natural killer cells. Several transcript variants encoding different isoforms have been found for this gene.

For Research Use Only

Thank you for your recent purchase.
 If you would like to learn more about antibodies, please visit www.elabscience.com.

**Focus on your research
 Service for life science**

Applications:WB-Western Blot IHC-Immunohistochemistry IF-Immunofluorescence IP-Immunoprecipitation FC-Flow cytometry ChIP-Chromatin Immunoprecipitation Reactivity: H-Human R-Rat M-Mouse Mk-Monkey Dg-Dog Ch-Chicken Hm-Hamster Rb-Rabbit Sh-Sheep Pg-Pig Z-Zebrafish X-Xenopus C-Cow.