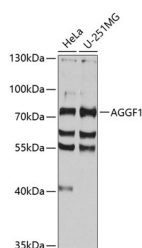


AGGF1 Polyclonal Antibody

Catalog No.	E-AB-67964	Reactivity	H
Storage	Store at -20°C. Avoid freeze / thaw cycles.	Host	Rabbit
Applications	WB	Isotype	IgG

Note: Centrifuge before opening to ensure complete recovery of vial contents.

Images



Western blot analysis of extracts of various cell lines using AGGF1 Polyclonal Antibody at 1:1000 dilution.

Immunogen Information

Immunogen	Recombinant fusion protein of human AGGF1
GeneID	55109
Swissprot	Q8N302
Synonyms	AGGF1,GPATC7,GPATCH7,HSU84971,HUS84971, VG5Q

Product Information

Calculated MW	12kDa/20kDa/80kDa
Observed MW	81kDa
Buffer	PBS with 0.02% sodium azide,50% glycerol,pH7.3.
Purify	Affinity purification
Dilution	WB 1:500-1:2000

Background

This gene encodes an angiogenic factor that promotes proliferation of endothelial cells. Mutations in this gene are associated with a susceptibility to Klippel-Trenaunay syndrome. Pseudogenes of this gene are found on chromosomes 3, 4, 10 and 16.

For Research Use Only

Thank you for your recent purchase.
 If you would like to learn more about antibodies, please visit www.elabscience.com.

**Focus on your research
 Service for life science**

Applications:WB-Western Blot IHC-Immunohistochemistry IF-Immunofluorescence IP-Immunoprecipitation FC-Flow cytometry ChIP-Chromatin Immunoprecipitation Reactivity: H-Human R-Rat M-Mouse Mk-Monkey Dg-Dog Ch-Chicken Hm-Hamster Rb-Rabbit Sh-Sheep Pg-Pig Z-Zebrafish X-Xenopus C-Cow.