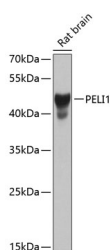


## PELI1 Polyclonal Antibody

|                     |   |                   |        |
|---------------------|---|-------------------|--------|
| <b>Catalog No.</b>  | E-AB-67967                                  | <b>Reactivity</b> | R      |
| <b>Storage</b>      | Store at -20°C. Avoid freeze / thaw cycles. | <b>Host</b>       | Rabbit |
| <b>Applications</b> | WB  | <b>Isotype</b>    | IgG    |

**Note:** Centrifuge before opening to ensure complete recovery of vial contents.

### Images



Western blot analysis of extracts of Rat brain using PELI1 Polyclonal Antibody at dilution of 1:1000.

### Immunogen Information

|                  |  |
|------------------|--|
| <b>Immunogen</b> | Recombinant fusion protein of human PELI1 (NP_065702.2). |
| <b>GeneID</b>    | 57162  |
| <b>Swissprot</b> | Q96FA3   |
| <b>Synonyms</b>  | PELI1  |

### Product Information

|                      |   |
|----------------------|---|
| <b>Calculated MW</b> | 46kDa   |
| <b>Observed MW</b>   | 46kDa   |
| <b>Buffer</b>        | PBS with 0.02% sodium azide, 50% glycerol, pH7.3. |
| <b>Purify</b>        | Affinity purification                             |
| <b>Dilution</b>      | WB 1:500-1:2000                                   |

### Background

PELI1 (Pellino E3 Ubiquitin Protein Ligase 1) is a Protein Coding gene. Diseases associated with PELI1 include Tyrosinemia, Type Iii. Among its related pathways are Diseases associated with the TLR signaling cascade and Activated TLR4 signalling. Gene Ontology (GO) annotations related to this gene include ligase activity and ubiquitin-protein transferase activity. An important paralog of this gene is PELI2.

#### For Research Use Only

Thank you for your recent purchase.  
 If you would like to learn more about antibodies, please visit [www.elabscience.com](http://www.elabscience.com).

**Focus on your research  
 Service for life science**

Applications: WB-Western Blot IHC-Immunohistochemistry IF-Immunofluorescence IP-Immunoprecipitation FC-Flow cytometry ChIP-Chromatin Immunoprecipitation Reactivity: H-Human R-Rat M-Mouse Mk-Monkey Dg-Dog Ch-Chicken Hm-Hamster Rb-Rabbit Sh-Sheep Pg-Pig Z-Zebrafish X-Xenopus C-Cow.