

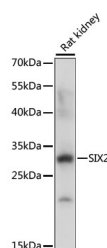
SIX2 Polyclonal Antibody

Catalog No. E-AB-68005
Storage Store at -20°C. Avoid freeze / thaw cycles.
Applications WB

Reactivity R
Host Rabbit
Isotype IgG

Note: Centrifuge before opening to ensure complete recovery of vial contents.

Images



Western blot analysis of extracts of Rat kidney using SIX2 Polyclonal Antibody at dilution of 1:1000.

Immunogen Information

Immunogen A synthetic peptide of human SIX2 (NP_058628.3).
GeneID 10736
Swissprot Q9NPC8
Synonyms SIX2

Product Information

Calculated MW 32kDa
Observed MW 32kDa
Buffer PBS with 0.02% sodium azide, 50% glycerol, pH7.3.
Purify Affinity purification
Dilution WB 1:200-1:2000

Background

This gene is a member of the vertebrate gene family which encode proteins homologous to the Drosophila 'sine oculis' homeobox protein. The encoded protein is a transcription factor which, like other members of this gene family, may be involved in limb or eye development.

For Research Use Only

Thank you for your recent purchase.

If you would like to learn more about antibodies, please visit www.elabscience.com.

Focus on your research
Service for life science

Applications: WB-Western Blot IHC-Immunohistochemistry IF-Immunofluorescence IP-Immunoprecipitation FC-Flow cytometry ChIP-Chromatin Immunoprecipitation Reactivity: H-Human R-Rat M-Mouse Mk-Monkey Dg-Dog Ch-Chicken Hm-Hamster Rb-Rabbit Sh-Sheep Pg-Pig Z-Zebrafish X-Xenopus C-Cow.