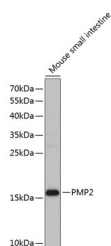


PMP2 Polyclonal Antibody

Catalog No.	E-AB-68008	Reactivity	M
Storage	Store at -20°C. Avoid freeze / thaw cycles.	Host	Rabbit
Applications	WB	Isotype	IgG

Note: Centrifuge before opening to ensure complete recovery of vial contents.

Images



Western blot analysis of extracts of Mouse small intestine using PMP2 Polyclonal Antibody at dilution of 1:1000.

Immunogen Information

Immunogen	Recombinant fusion protein of human PMP2 (NP_002668.1).
GeneID	5375
Swissprot	P02689
Synonyms	PMP2,FABP8,M-FABP,MP2,P2

Product Information

Calculated MW	14kDa
Observed MW	15kDa
Buffer	PBS with 0.02% sodium azide, 50% glycerol, pH7.3.
Purify	Affinity purification
Dilution	WB 1:500-1:2000

Background

Peripheral Myelin protein-2 (PMP2, Myelin P2, MP2), a small basic enzyme, is one of the principal proteins of peripheral Myelin and presumably participates in the transport of fatty acids or the metabolism of Myelin lipids. Myelin P2 is similar in amino acid sequence and tertiary structure to fatty acid binding proteins found in the liver, adipocytes and intestine, although its expression is restricted to the nervous system.

For Research Use Only

Thank you for your recent purchase.
 If you would like to learn more about antibodies, please visit www.elabscience.com.

**Focus on your research
 Service for life science**

Applications:WB-Western Blot IHC-Immunohistochemistry IF-Immunofluorescence IP-Immunoprecipitation FC-Flow cytometry ChIP-Chromatin Immunoprecipitation Reactivity: H-Human R-Rat M-Mouse Mk-Monkey Dg-Dog Ch-Chicken Hm-Hamster Rb-Rabbit Sh-Sheep Pg-Pig Z-Zebrafish X-Xenopus C-Cow.