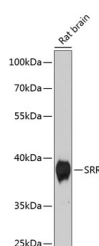


SRR Polyclonal Antibody

Catalog No.	E-AB-68017	Reactivity	H,M,R
Storage	Store at -20°C. Avoid freeze / thaw cycles.	Host	Rabbit
Applications	WB	Isotype	IgG

Note: Centrifuge before opening to ensure complete recovery of vial contents.

Images



Western blot analysis of extracts of Rat brain using SRR Polyclonal Antibody at dilution of 1:1000.

Immunogen Information

Immunogen	Recombinant fusion protein of human SRR (NP_068766.1).
GeneID	63826
Swissprot	Q9GZT4
Synonyms	SRR,ILV1,ISO1

Product Information

Calculated MW	36kDa
Observed MW	37kDa
Buffer	PBS with 0.02% sodium azide, 50% glycerol, pH7.3.
Purify	Affinity purification
Dilution	WB 1:500-1:2000

Background

SRR (Serine Racemase) is a Protein Coding gene. Diseases associated with SRR include Robinow Syndrome, Autosomal Recessive 1 and Vitamin E, Familial Isolated Deficiency Of. Among its related pathways are Neuroscience and Metabolism. Gene Ontology (GO) annotations related to this gene include calcium ion binding and magnesium ion binding. An important paralog of this gene is CBS.

For Research Use Only

Thank you for your recent purchase.
If you would like to learn more about antibodies, please visit www.elabscience.com.

Focus on your research Service for life science

Applications: WB-Western Blot IHC-Immunohistochemistry IF-Immunofluorescence IP-Immunoprecipitation FC-Flow cytometry ChIP-Chromatin Immunoprecipitation Reactivity: H-Human R-Rat M-Mouse Mk-Monkey Dg-Dog Ch-Chicken Hm-Hamster Rb-Rabbit Sh-Sheep Pg-Pig Z-Zebrafish X-Xenopus C-Cow.