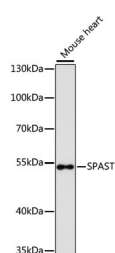


SPAST Polyclonal Antibody

| | | | |
|---------------------|---------------------------------------------|-------------------|--------|
| Catalog No. | E-AB-68022 | Reactivity | H,M |
| Storage | Store at -20°C. Avoid freeze / thaw cycles. | Host | Rabbit |
| Applications | WB | Isotype | IgG |

Note: Centrifuge before opening to ensure complete recovery of vial contents.

Images



Western blot analysis of extracts of Mouse heart using SPAST Polyclonal Antibody at dilution of 1:3000.

Immunogen Information

| | |
|------------------|----------------------------------------------------------|
| Immunogen | Recombinant fusion protein of human SPAST (NP_055761.2). |
| GeneID | 6683 |
| Swissprot | Q9UBP0 |
| Synonyms | SPAST,ADPSP,FSP2,SPG4,spastin |

Product Information

| | |
|----------------------|---------------------------------------------------|
| Calculated MW | 54kDa/58kDa/63kDa/67kDa |
| Observed MW | 52kDa |
| Buffer | PBS with 0.02% sodium azide, 50% glycerol, pH7.3. |
| Purify | Affinity purification |
| Dilution | WB 1:500-1:2000 |

Background

This gene encodes a member of the AAA (ATPases associated with a variety of cellular activities) protein family. Members of this protein family share an ATPase domain and have roles in diverse cellular processes including membrane trafficking, intracellular motility, organelle biogenesis, protein folding, and proteolysis. The encoded ATPase may be involved in the assembly or function of nuclear protein complexes. Two transcript variants encoding distinct isoforms have been identified for this gene. Other alternative splice variants have been described but their full length sequences have not been determined. Mutations associated with this gene cause the most frequent form of autosomal dominant spastic paraplegia 4.

For Research Use Only

Thank you for your recent purchase.
 If you would like to learn more about antibodies, please visit www.elabscience.com.

**Focus on your research
 Service for life science**

Applications:WB-Western Blot IHC-Immunohistochemistry IF-Immunofluorescence IP-Immunoprecipitation FC-Flow cytometry ChIP-Chromatin Immunoprecipitation Reactivity: H-Human R-Rat M-Mouse Mk-Monkey Dg-Dog Ch-Chicken Hm-Hamster Rb-Rabbit Sh-Sheep Pg-Pig Z-Zebrafish X-Xenopus C-Cow.