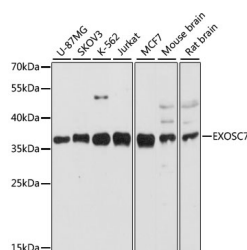


EXOSC7 Polyclonal Antibody

Catalog No.	E-AB-68027	Reactivity	H,M,R
Storage	Store at -20°C. Avoid freeze / thaw cycles.	Host	Rabbit
Applications	WB	Isotype	IgG

Note: Centrifuge before opening to ensure complete recovery of vial contents.

Images



Western blot analysis of extracts of various cell lines using EXOSC7 Polyclonal Antibody at dilution of 1:3000.

Immunogen Information

Immunogen	Recombinant fusion protein of human EXOSC7 (NP_055819.2).
GeneID	23016
Swissprot	Q15024
Synonyms	EXOSC7,EAP1,RRP42,Rrp42p,hRrp42p,p8

Product Information

Calculated MW	31kDa
Observed MW	37kDa
Buffer	PBS with 0.02% sodium azide, 50% glycerol, pH7.3.
Purify	Affinity purification
Dilution	WB 1:200-1:2000

Background

EXOSC7 (Exosome Component 7) is a Protein Coding gene. Among its related pathways are rRNA processing in the nucleus and cytosol and Regulation of activated PAK-2p34 by proteasome mediated degradation. Gene Ontology (GO) annotations related to this gene include RNA binding and exoribonuclease activity. An important paralog of this gene is EXOSC9.

For Research Use Only

Thank you for your recent purchase.
 If you would like to learn more about antibodies, please visit www.elabscience.com.

**Focus on your research
 Service for life science**

Applications:WB-Western Blot IHC-Immunohistochemistry IF-Immunofluorescence IP-Immunoprecipitation FC-Flow cytometry ChIP-Chromatin Immunoprecipitation Reactivity: H-Human R-Rat M-Mouse Mk-Monkey Dg-Dog Ch-Chicken Hm-Hamster Rb-Rabbit Sh-Sheep Pg-Pig Z-Zebrafish X-Xenopus C-Cow.