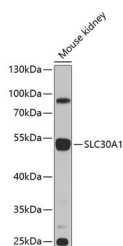


SLC30A1 Polyclonal Antibody

Catalog No.	E-AB-68039	Reactivity	H,M,R
Storage	Store at -20°C. Avoid freeze / thaw cycles.	Host	Rabbit
Applications	WB	Isotype	IgG

Note: Centrifuge before opening to ensure complete recovery of vial contents.

Images



Western blot analysis of extracts of mouse kidney using SLC30A1 Polyclonal Antibody at 1:1000 dilution.

Immunogen Information

Immunogen	A synthetic peptide of human SLC30A1
GeneID	7779
Swissprot	Q9Y6M5
Synonyms	SLC30A1,ZNT1,ZRC1

Product Information

Calculated MW	55kDa
Observed MW	55kDa
Buffer	PBS with 0.02% sodium azide,50% glycerol,pH7.3.
Purify	Affinity purification
Dilution	WB 1:500-1:2000

Background

May be involved in zinc transport out of the cell.

For Research Use Only

Thank you for your recent purchase.

If you would like to learn more about antibodies, please visit www.elabscience.com.

**Focus on your research
 Service for life science**

Applications:WB-Western Blot IHC-Immunohistochemistry IF-Immunofluorescence IP-Immunoprecipitation FC-Flow cytometry ChIP-Chromatin Immunoprecipitation Reactivity: H-Human R-Rat M-Mouse Mk-Monkey Dg-Dog Ch-Chicken Hm-Hamster Rb-Rabbit Sh-Sheep Pg-Pig Z-Zebrafish X-Xenopus C-Cow.