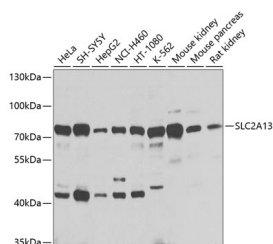


SLC2A13 Polyclonal Antibody

| | | | |
|---------------------|---------------------------------------------|-------------------|--------|
| Catalog No. | E-AB-68040 | Reactivity | H,M,R |
| Storage | Store at -20°C. Avoid freeze / thaw cycles. | Host | Rabbit |
| Applications | WB | Isotype | IgG |

Note: Centrifuge before opening to ensure complete recovery of vial contents.

Images



Western blot analysis of extracts of various cell lines using SLC2A13 Polyclonal Antibody at 1:1000 dilution.

Immunogen Information

| | |
|------------------|---------------------------------------------|
| Immunogen | Recombinant fusion protein of human SLC2A13 |
| GeneID | 114134 |
| Swissprot | Q96QE2 |
| Synonyms | SLC2A13,HMIT |

Product Information

| | |
|----------------------|-------------------------------------------------|
| Calculated MW | 70kDa |
| Observed MW | 73kDa |
| Buffer | PBS with 0.02% sodium azide,50% glycerol,pH7.3. |
| Purify | Affinity purification |
| Dilution | WB 1:1000-1:4000 |

Background

H(+)-myo-inositol cotransporter. Can also transport related stereoisomers.

For Research Use Only

Thank you for your recent purchase.
 If you would like to learn more about antibodies, please visit www.elabscience.com.

**Focus on your research
 Service for life science**

Applications:WB-Western Blot IHC-Immunohistochemistry IF-Immunofluorescence IP-Immunoprecipitation FC-Flow cytometry ChIP-Chromatin Immunoprecipitation Reactivity: H-Human R-Rat M-Mouse Mk-Monkey Dg-Dog Ch-Chicken Hm-Hamster Rb-Rabbit Sh-Sheep Pg-Pig Z-Zebrafish X-Xenopus C-Cow.