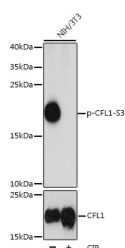


## Phospho-CFL1(S3) Polyclonal Antibody

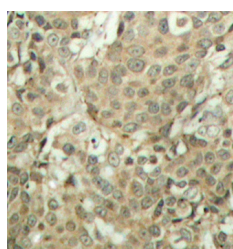
<b>Catalog No.</b>	E-AB-68106	<b>Reactivity</b>	H,M,R
<b>Storage</b>	Store at -20°C. Avoid freeze / thaw cycles.	<b>Host</b>	Rabbit
<b>Applications</b>	WB,IHC,IF	<b>Isotype</b>	IgG

**Note:** Centrifuge before opening to ensure complete recovery of vial contents.

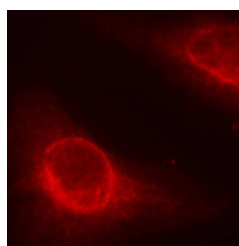
### Images



Western blot analysis of extracts of NIH/3T3 cells using Phospho-CFL1(S3) Polyclonal Antibody at dilution of 1:1000.



Immunohistochemistry of paraffin-embedded Human breast carcinoma tissue, using Phospho-CFL1(S3) Polyclonal Antibody



Immunofluorescence analysis of methanol-fixed HeLa cells using Phospho-CFL1(S3) Polyclonal Antibody

### Immunogen Information

<b>Immunogen</b>	A phospho specific peptide corresponding to residues surrounding S3 of human CFL1
<b>GeneID</b>	1072
<b>Swissprot</b>	P23528
<b>Synonyms</b>	CFL1,CFL,HEL-S-15,cofilin,cofilin-1

### Product Information

<b>Calculated MW</b>	18kDa
<b>Observed MW</b>	18kDa
<b>Buffer</b>	PBS with 0.02% sodium azide, 50% glycerol, pH7.3.
<b>Purify</b>	Affinity purification
<b>Dilution</b>	WB 1:500-1:2000 IHC 1:50-1:100 IF 1:100-1:200

### Background

The protein encoded by this gene can polymerize and depolymerize F-actin and G-actin in a pH-dependent manner. Increased phosphorylation of this protein by LIM kinase aids in Rho-induced reorganization of the actin cytoskeleton. Cofilin is a widely distributed intracellular actin-modulating protein that binds and depolymerizes filamentous F-actin and inhibits the polymerization of monomeric G-actin in a pH-dependent manner. It is involved in the translocation of actin-cofilin complex from cytoplasm to nucleus.

#### For Research Use Only

Thank you for your recent purchase.  
 If you would like to learn more about antibodies, please visit [www.elabscience.com](http://www.elabscience.com).

**Focus on your research  
 Service for life science**

Applications:WB-Western Blot IHC-Immunohistochemistry IF-Immunofluorescence IP-Immunoprecipitation FC-Flow cytometry ChIP-Chromatin Immunoprecipitation Reactivity: H-Human R-Rat M-Mouse Mk-Monkey Dg-Dog Ch-Chicken Hm-Hamster Rb-Rabbit Sh-Sheep Pg-Pig Z-Zebrafish X-Xenopus C-Cow.